

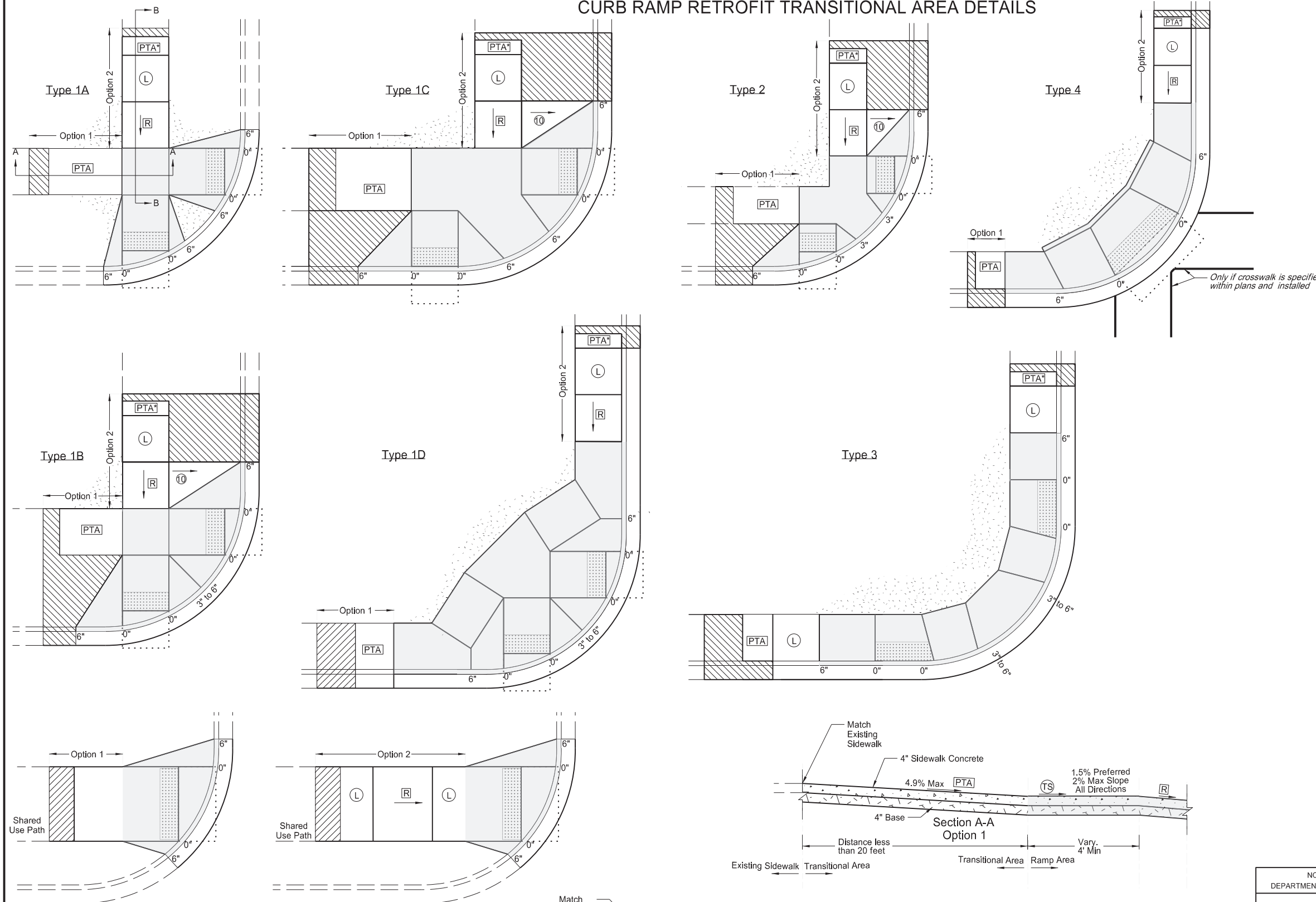
CURB RAMP RETROFIT TRANSITIONAL AREA DETAILS

D-750-4

NOTES:

1. Curb Ramp Transitional Areas are to transition from the Curb Ramp area into the Existing Pedestrian Facility (EPF). Each layout shows example transitions. Use any combination for transitions from the Ramp Area into the EPF that allows for similar or gentler slopes to that of the existing condition, yet transitions in the shortest distance possible. In some cases, if grades allow, the Ramp area can immediately transition into the EPF and no transitional area is needed.
2. Option 1: Use this transition when existing running slope grades are less than 5%. Transition from the ramp area to the EPF using the Pedestrian Access Transition Area (PTA) transition rates and in less than 20 feet.
3. Option 2: Use this transition when existing running slopes are greater than 5% and option 1 is not able to be met.

Add a ramp and a landing immediately after the ramp area. Then transition from the compliant landing into the EPF using the PTA rates (preferred), or in less than 15 feet (which ever is shorter).
4. Transitional Areas for Shared Use Paths can be concrete or asphalt.
5. See Curb Ramp Retrofit Details Standard D-750-3 for additional information.



LEGEND:

- : Detectable Warning Panel.
- : Landscaping.
- : Transitional tie-in to nearest joint, if needed.
- : Curb Ramp Retrofit Area (See Standard Drawing D750-3)
- : 4' long x width of EPF or 4' minimum Clear space outside traffic lanes of travel. 1.5% preferred cross slope 2% maximum cross slope 4.7% preferred running slope 5% maximum running slope
- PTA** : Pedestrian Access Transition Area Running Slope less than 4.9%. Transition Cross Section at 1/2 percent per foot from the Ramp Area to EPF.
- L** **TS** : Turning Space/Landing Use at top of ramp or when changing directions. 1.5% preferred slope (2% maximum) all directions.
- R** : Preferred Ramp Grade = 5% to 7.5%. Maximum Constructed Grade = 8.3%. Preferred Cross Slope = 1.5%. Maximum Constructed Cross Slope = 2% Maximum Length = 15 feet
- 10** : 10:1 maximum constructed slope.
- 4** : 4:1 maximum constructed slope.
- 0", 3", or 6" : Curb Height.

Transition Areas for Shared Use Paths

NORTH DAKOTA DEPARTMENT OF TRANSPORTATION	
05-19-21	
REVISIONS	
DATE	CHANGE



05 19 2021