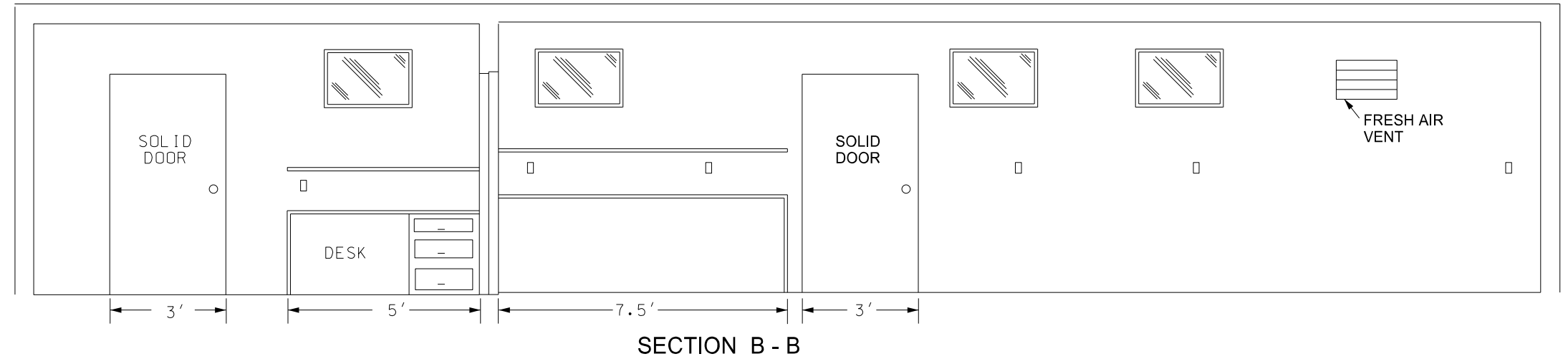
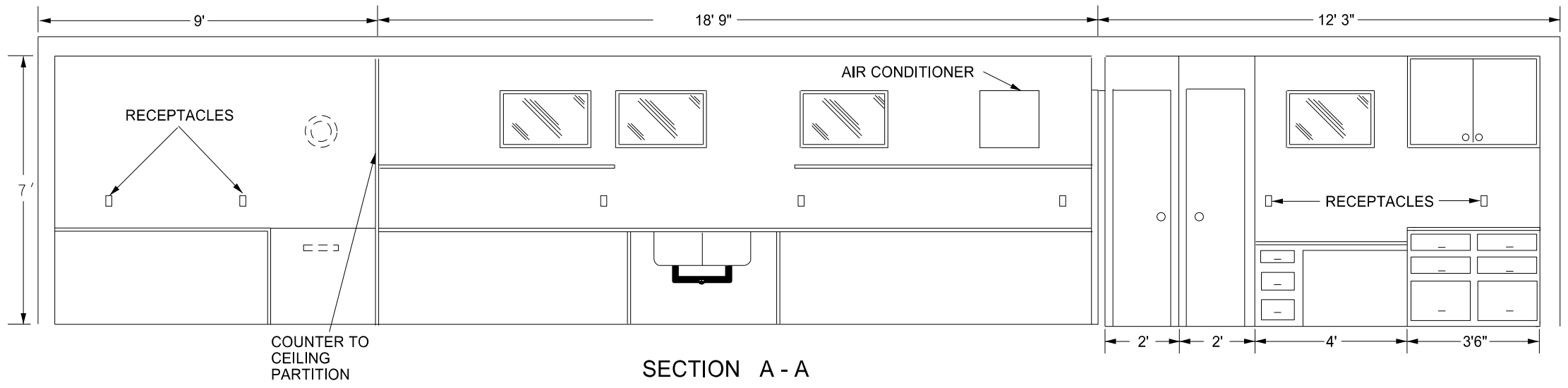
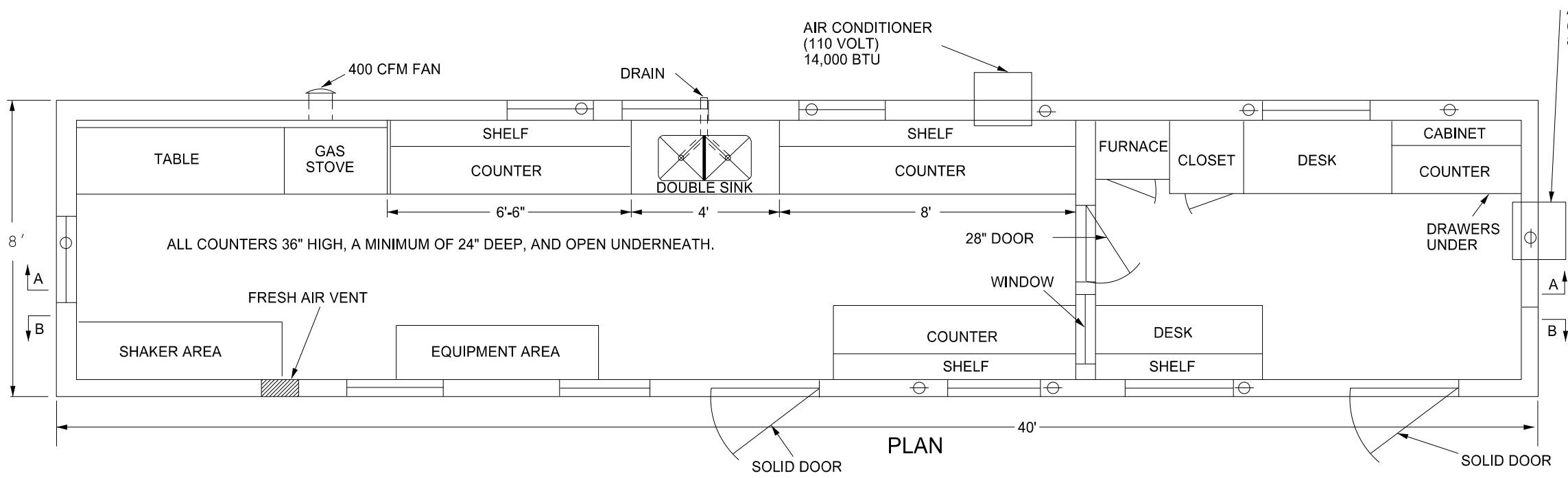


BITUMINOUS LABORATORY

D-706-1



- Provide a laboratory with the following:
1. A 1'x1' shelf at 36" above the regular countertop.
 2. Double compartment stainless steel sink, with each compartment a minimum of 16"x14"x10" deep. Provide water service lines made of copper or plastic and a diameter of 1/2 inch.
 3. An exhaust fan capable of removing inside air at a rate of 400 CFM.
 4. Fresh air vent hinged to open or close manually.
 5. 24" x 48" table capable of holding a 200 lb masonry saw with a minimum clearance of 36" above the table.
 6. A water supply tank with a capacity of 500 gallons and a 20 gallon capacity pressure tank on the pump.
 7. Heavy duty type locks, latches, and hinges for doors made to withstand the intense use in service.
 8. A wall between the office and the work area properly insulated to prevent the transmission of heat and noise.
 9. The steel cable tie downs and ground anchors at each corner of the lab.
 10. Electrical service entrance wired for 100 amps and separate circuits for air conditioners. Space convenience outlets in counter areas a minimum of four feet apart.

NORTH DAKOTA DEPARTMENT OF TRANSPORTATION	
10-03-13	
REVISIONS	
DATE	CHANGE
07-30-14	Changed standard's title and revised notes.
01-11-16	Revised notes.
08-27-19	New Design Engineer PE Stamp

This document was originally issued and sealed by
Kirk J Hoff,
 Registration Number
PE- 4683,
 on **08/27/19** and the original document is stored at the North Dakota Department of Transportation