

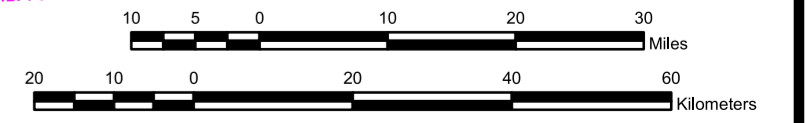
13 / 390.130
81 / 163.105 HIGHWAY / REFERENCE POINT

INDICATES INSET ENLARGEMENT ON REVERSE SIDE

ROUTE AND MILEAGE MAP
BASED ON COMMON DATA REFERENCE SYSTEM

STATE OF NORTH DAKOTA

PREPARED BY THE
NORTH DAKOTA DEPARTMENT OF TRANSPORTATION
PLANNING / ASSET MANAGEMENT DIVISION
IN COOPERATION WITH THE
U.S. DEPARTMENT OF TRANSPORTATION
FEDERAL HIGHWAY ADMINISTRATION

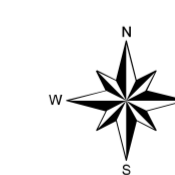
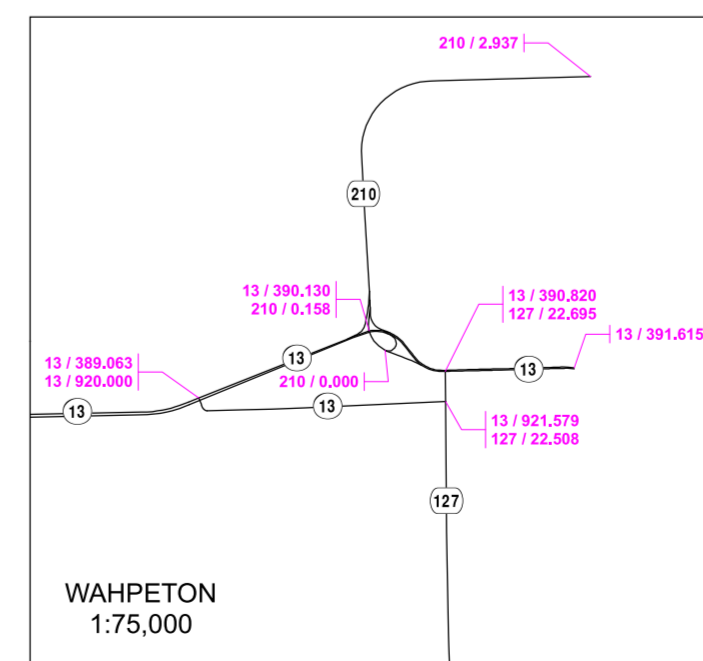
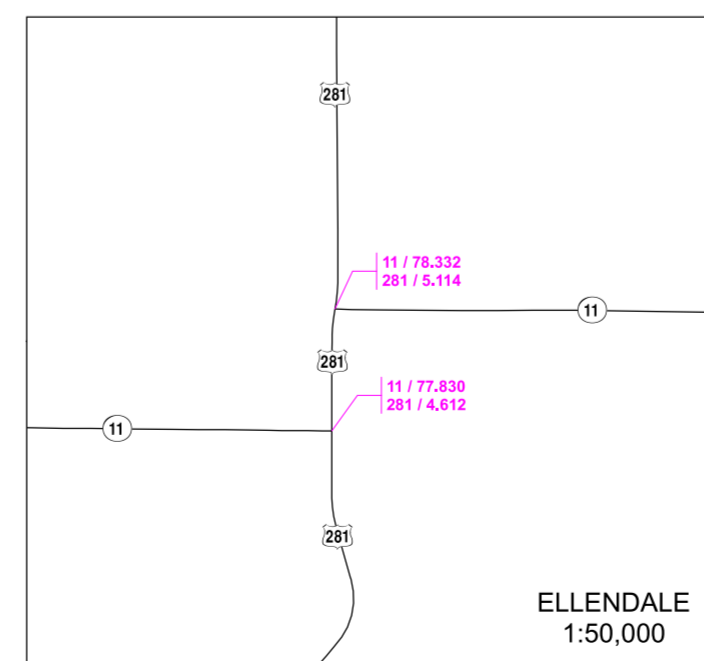
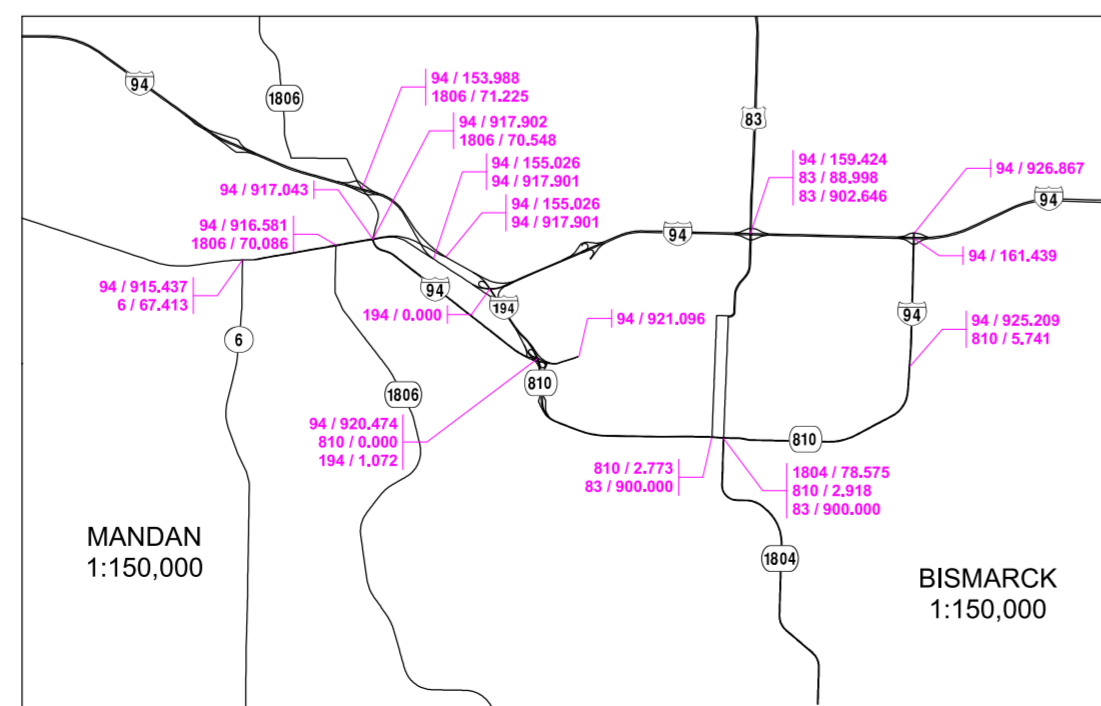
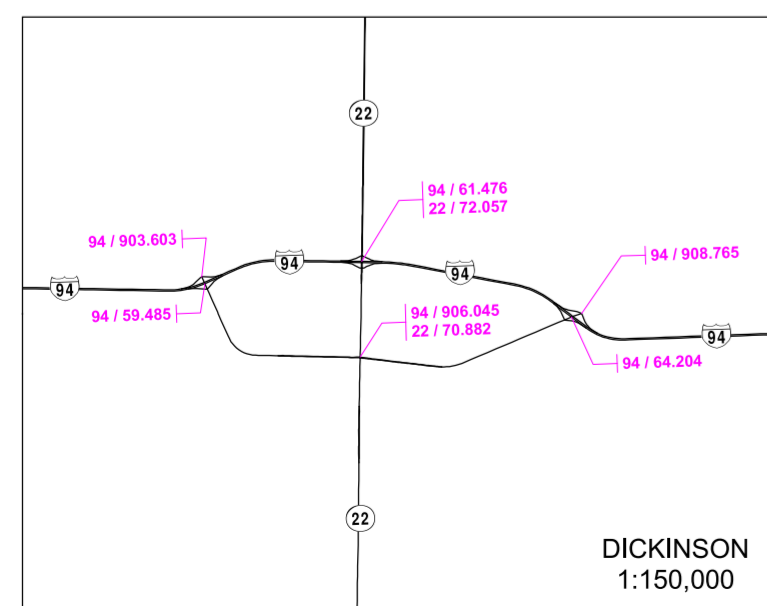
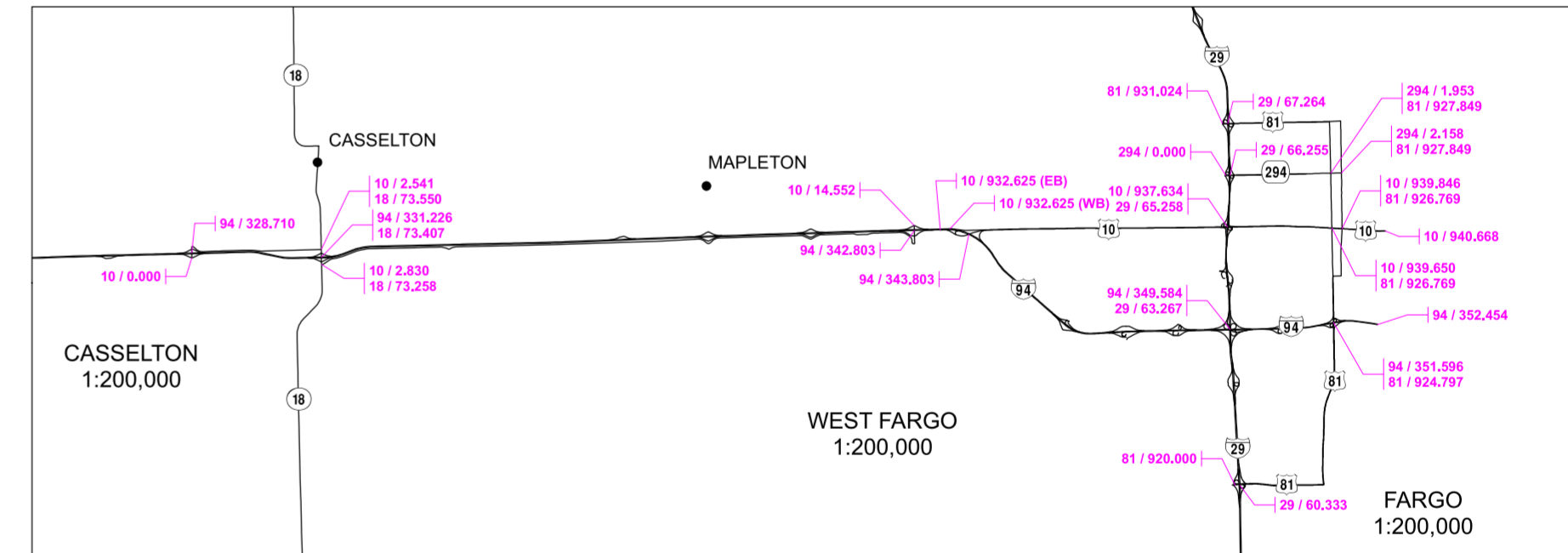
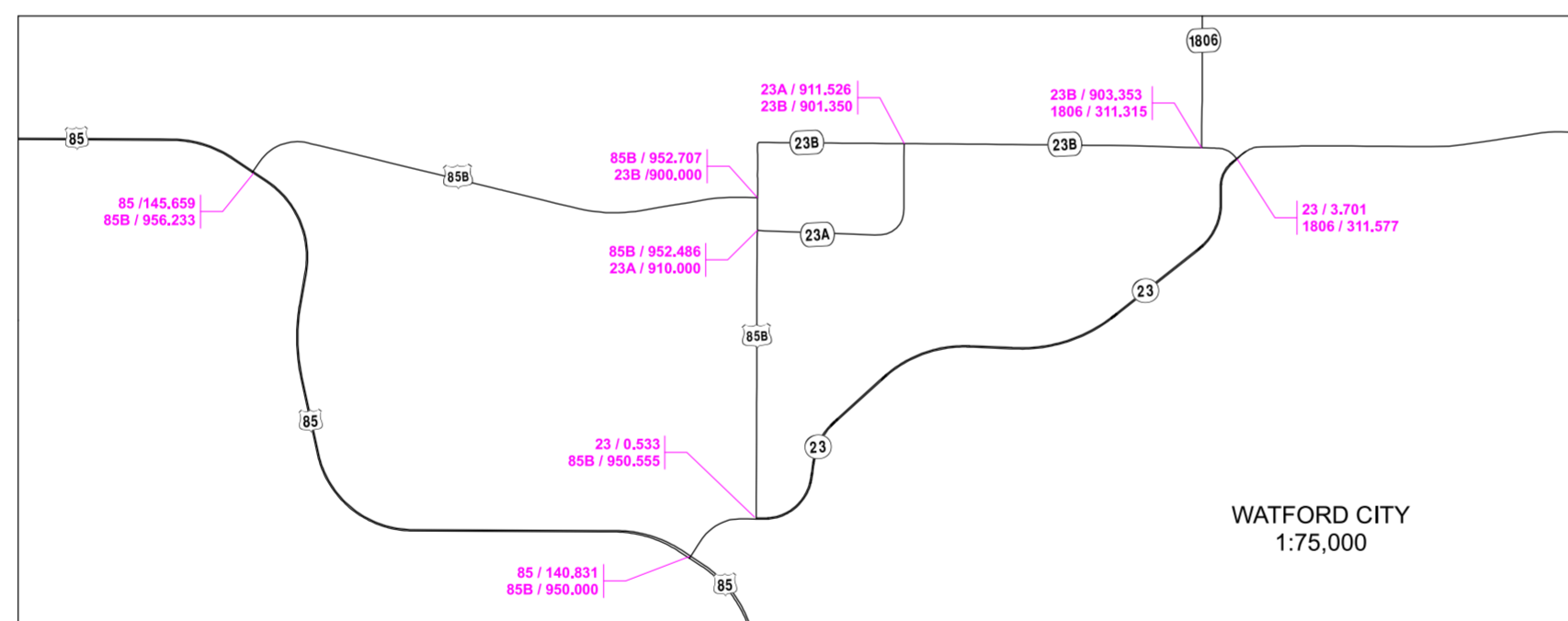
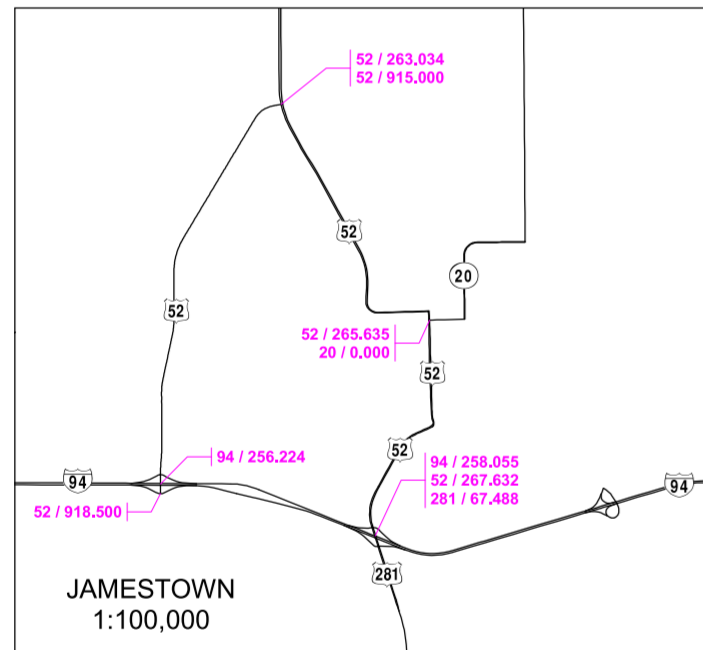
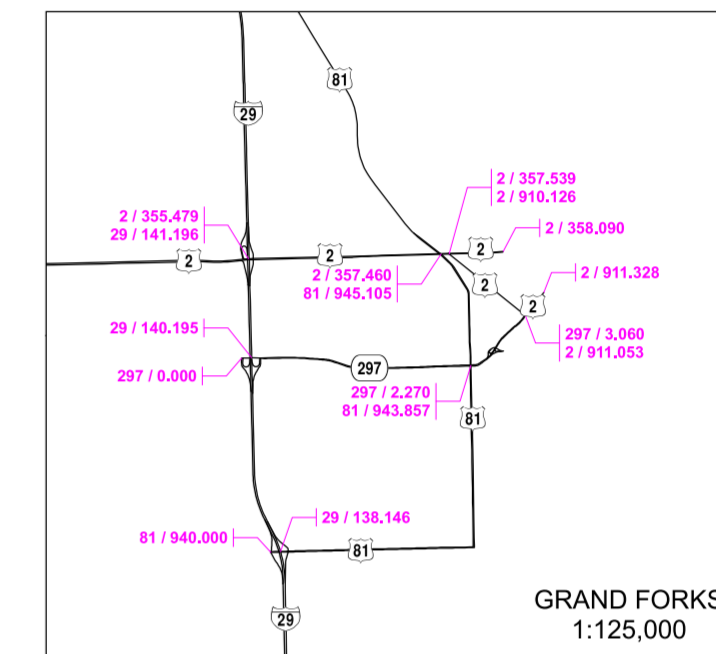
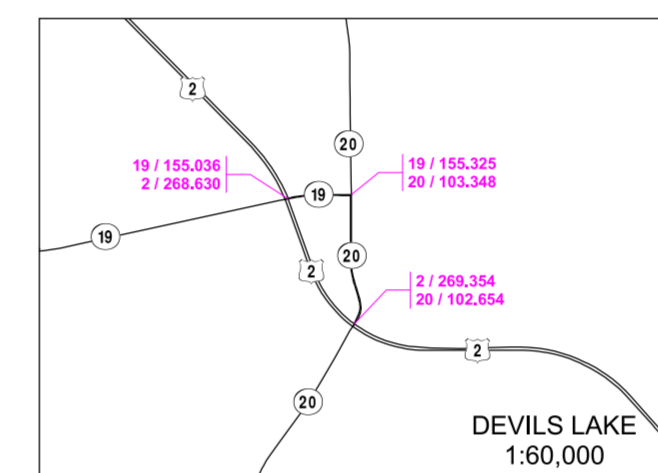
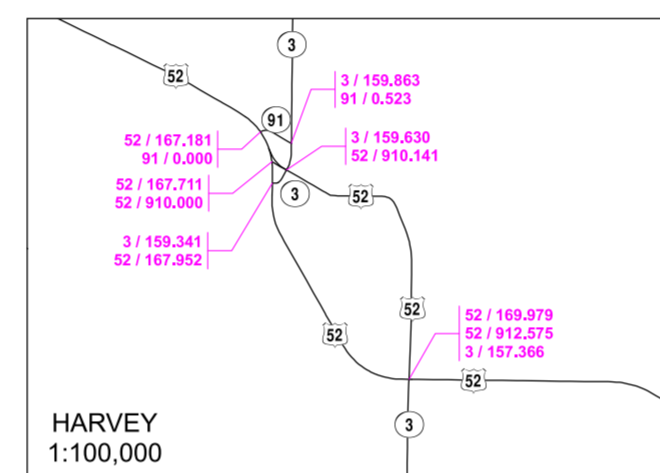
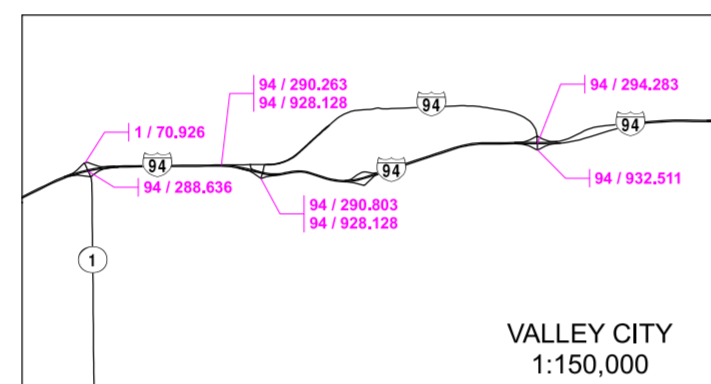
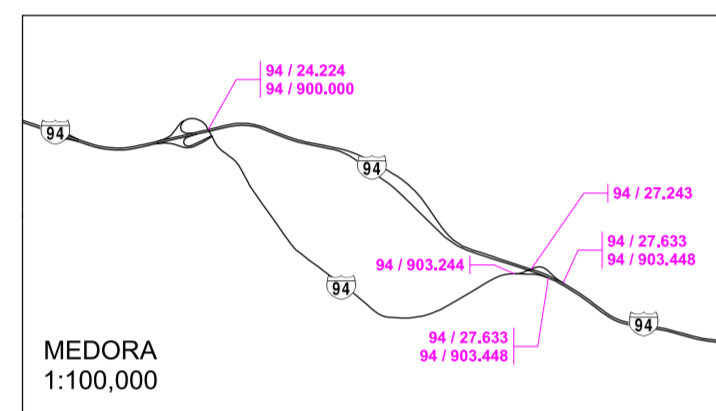
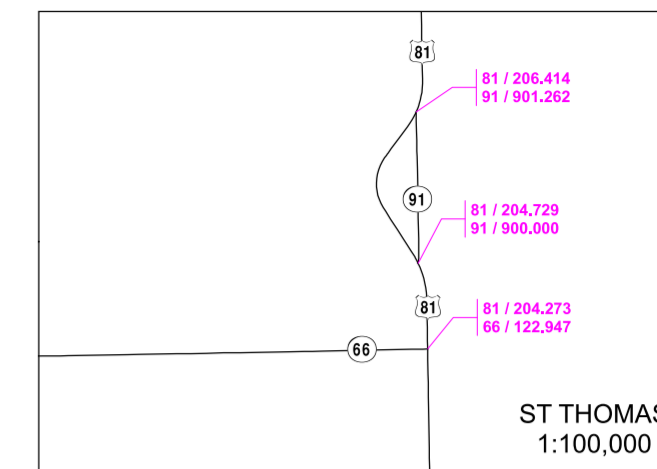
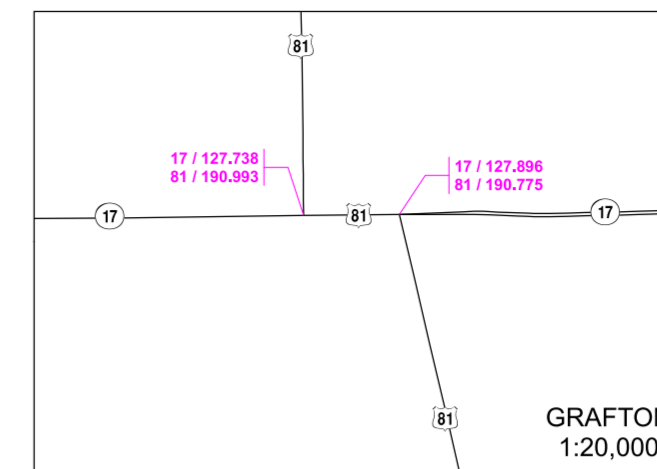
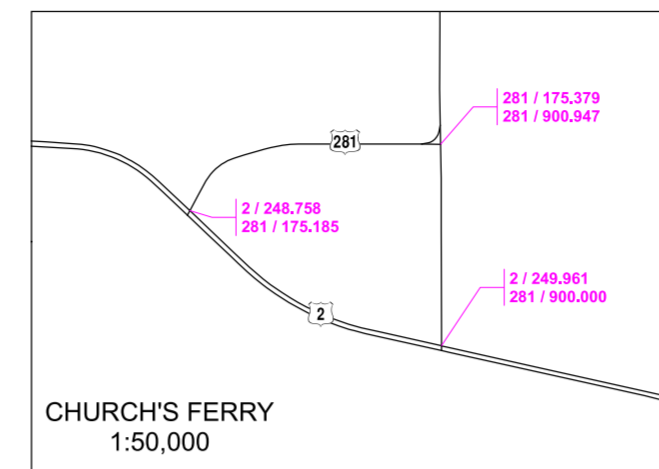
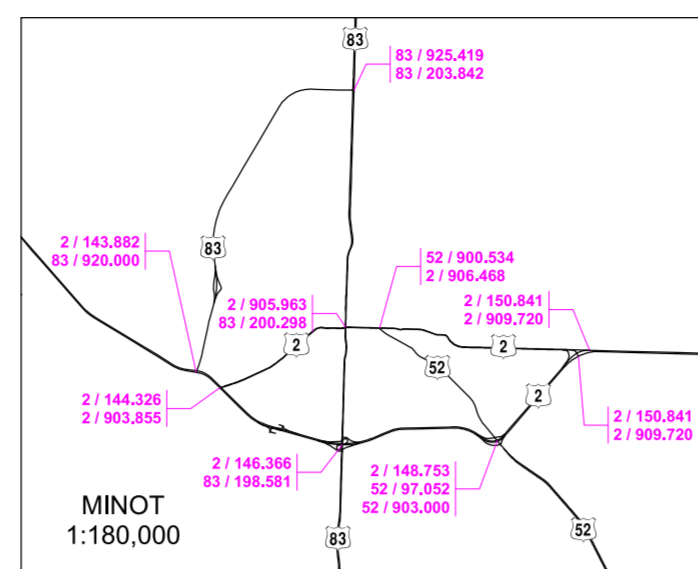
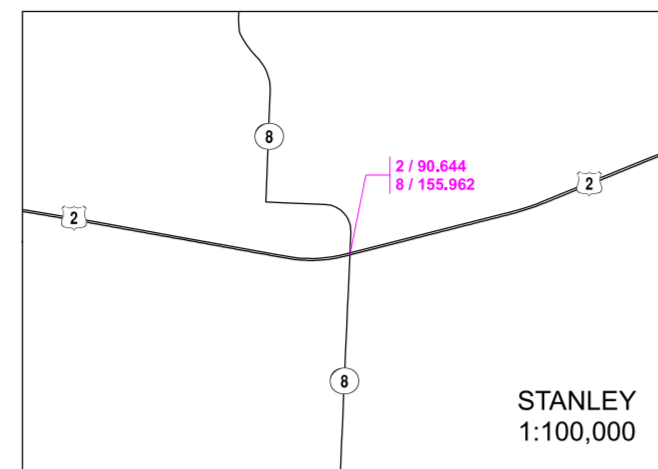
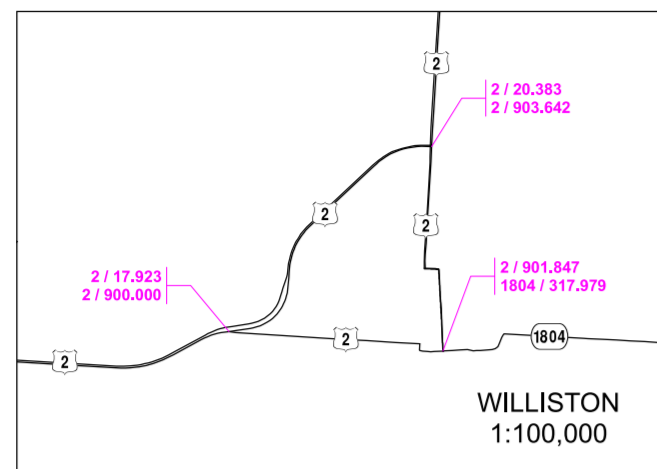


Notice of Disclaimer
The North Dakota Department of Transportation (NDDOT) makes this map available on an "as is" basis as a public service. Under no circumstances does NDDOT warrant or certify the information to be free of errors or deficiencies of any kind. NDDOT specifically disclaims all warranties, express or implied, including but not limited to the warranties of merchantability and fitness for a particular purpose.

COPIES OF THIS MAP ARE AVAILABLE FOR PUBLIC USE AT A SPECIAL COST FROM:
MAP SALES, ND DEPARTMENT OF TRANSPORTATION, 608 E. BLVD. AVE., BISMARCK, N.D. 58505-0700

GIS MAP PRODUCED BY THE CARTOGRAPHY SECTION
PLANNING / ASSET MANAGEMENT DIVISION

2014



ROUTE AND MILEAGE MAP INSETS

BASED ON COMMON DATA REFERENCE SYSTEM
STATE OF
NORTH DAKOTA

PREPARED BY THE
NORTH DAKOTA DEPARTMENT OF TRANSPORTATION
PLANNING / ASSET MANAGEMENT DIVISION
IN COOPERATION WITH THE
U.S. DEPARTMENT OF TRANSPORTATION
FEDERAL HIGHWAY ADMINISTRATION

2014

Notice of Disclaimer
The North Dakota Department of Transportation (NDDOT) makes this map available on an "as is" basis as a public service. Under no circumstances does NDDOT warrant or certify the information to be free of errors or deficiencies of any kind. NDDOT specifically disclaims all warranties, express or implied, including but not limited to the warranties of merchantability and fitness for a particular purpose.
COPIES OF THIS MAP ARE AVAILABLE FOR PUBLIC USE AT A NOMINAL COST FROM:
MAP SALES, ND DEPARTMENT OF TRANSPORTATION, 608 E. BLVD. AVE., BISMARCK, N.D. 58505-0700