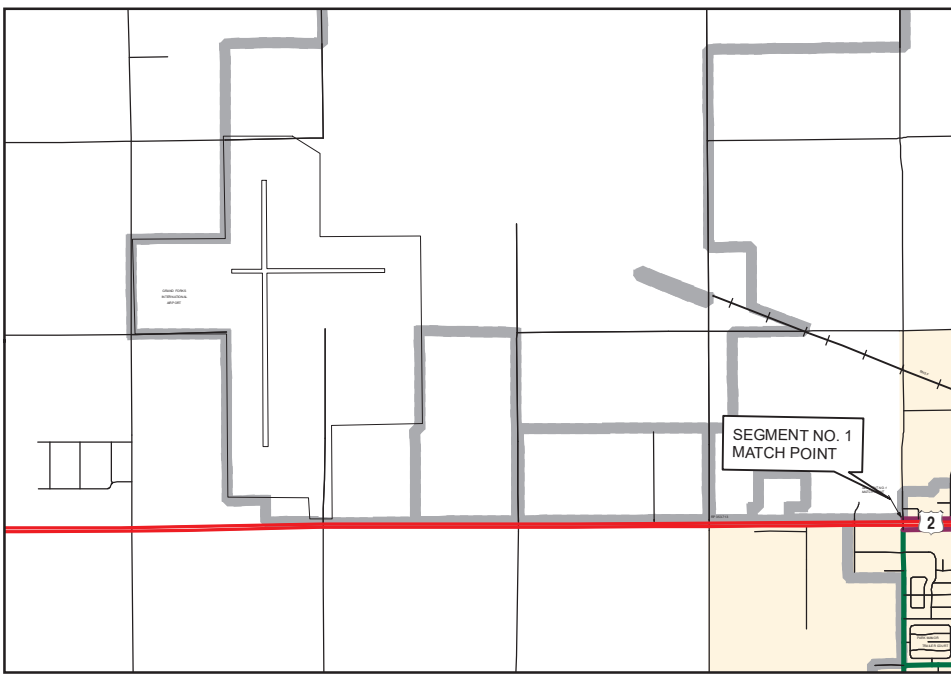


Interstate	
Principal Arterials	
Minor Arterials	
Collectors	
2002 Urban Limits	
Corporate Limits	

SEGMENT NO. 1
MATCH POINT

*REVISED 02/28/2021, FHWA approved 12/03/21
 *REVISED 05/30/2006
 *REVISED 9/9/10 (Correct data error on Collector
 N Grand Forks on State Mill Road)
 *REVISED 09/28/12, FHWA approved 08/30/10

Notice of Disclaimer
 The North Dakota Department of Transportation (NDDOT) makes this map available on an "as is" basis as a public service. Under no circumstances does NDDOT warrant or certify the information to be free of errors or deficiencies of any kind. NDDOT specifically disclaims all warranties, express or implied, including but not limited to the warranties of merchantability and fitness for a particular purpose.
 COPIES OF THIS MAP ARE AVAILABLE FOR PUBLIC USE AT A NOMINAL COST FROM:
 MAP SALES, ND DEPARTMENT OF TRANSPORTATION, 608 E. BLVD. AVE., BISMARCK, N.D. 58505-0700



SEGMENT NO. 1
MATCH POINT

2022
FUNCTIONAL CLASSIFICATION
 2020 POPULATION 59,166
GRAND FORKS
 GRAND FORKS COUNTY
 NORTH DAKOTA
 PREPARED BY
 NORTH DAKOTA DEPARTMENT OF TRANSPORTATION
 PLANNING / ASSET MANAGEMENT DIVISION
 IN COOPERATION WITH THE
 U.S. DEPARTMENT OF TRANSPORTATION
 FEDERAL HIGHWAY ADMINISTRATION
 SCALE
 0 1,750 3,500 7,000
 Feet