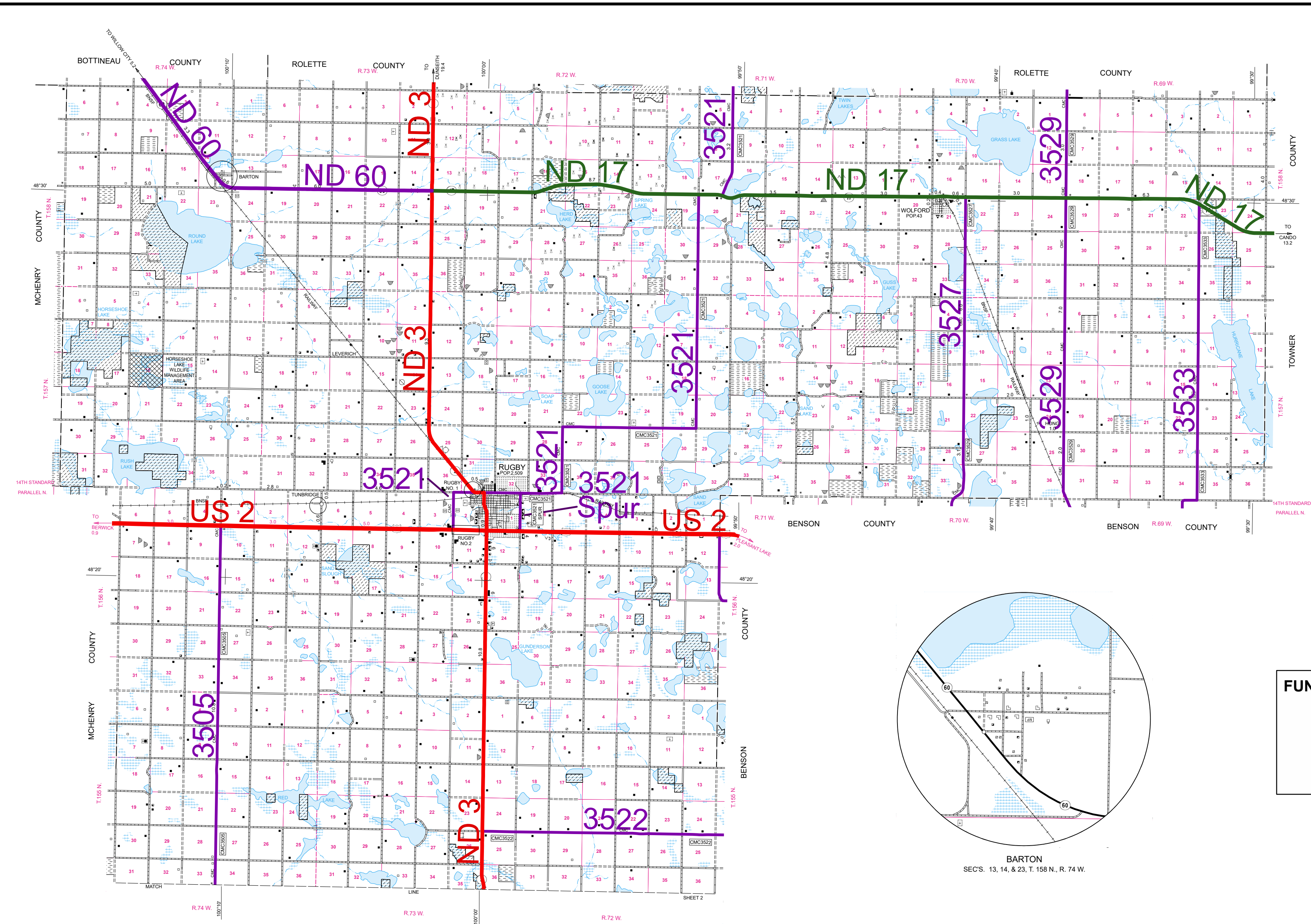


2007 FUNCTIONAL CLASSIFICATION



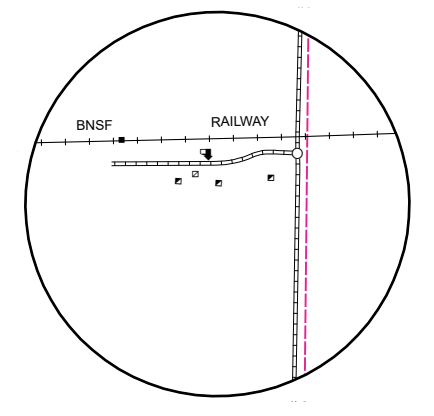
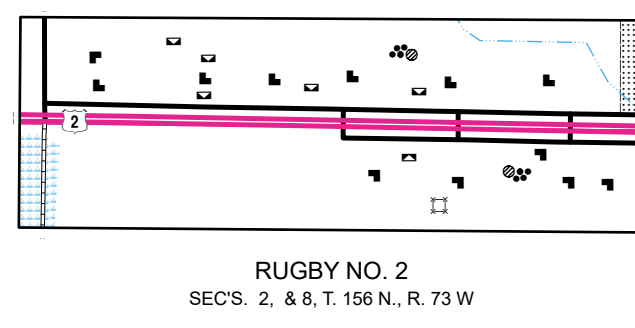
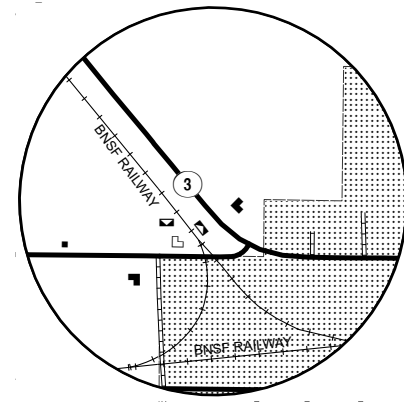
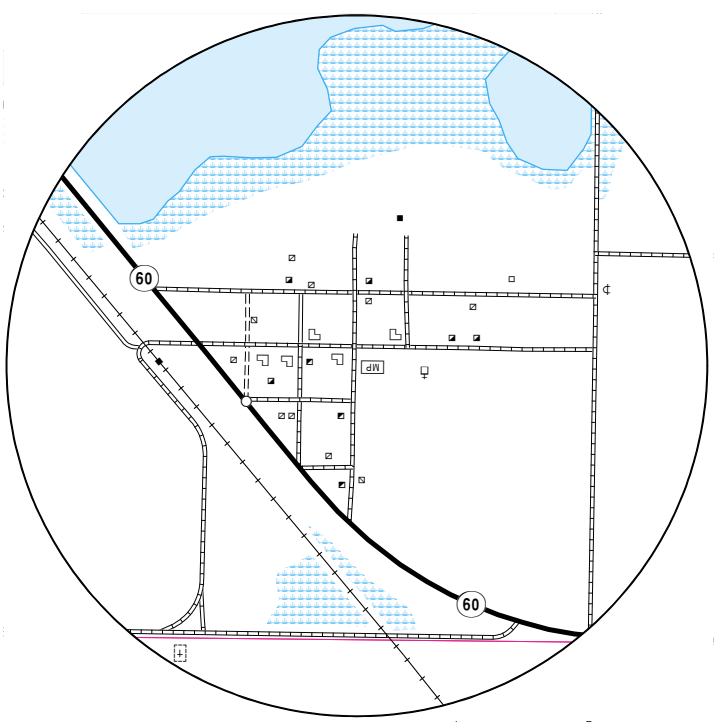
GENERAL LEGEND	
ROADS AND ROADWAY FEATURES	FARM UNITS, DWELLINGS, ETC.
PRIMITIVE ROAD	FARM UNIT (FARM UNITS SHOWN IN
UNIMPROVED ROAD	MUNICIPAL LIMITS INDICATE FARM
GRAVEL GRADED AND DRAINED ROAD	BUILDINGS FOR FARM USE
GRAVEL GRADED AND DRAINED ROAD	DWELLING OTHER THAN FARM
PAVED ROAD	ROWS OR GROUPS OF DWELLINGS
STREETS IN UNINCORPORATED AREAS	CLOSELY SPACED (FIGURE DENOTES
INTERCHANGE	NUMBER OF DWELLINGS)
COUNTY MAJOR COLLECTOR	SEASONAL OR SUMMER COLONY
ROUTE NUMBER	DWELLING
POINTS BETWEEN WHICH	HOTEL OR INN
DISTANCES ARE MEASURED	CHURCH
INTERSTATE NUMBERED HIGHWAY	CEMETERY
U.S. NUMBERED HIGHWAY	CHURCH WITH CEMETERY ADJACENT
STATE HIGHWAY SYSTEM	WELL
BOUNDARIES	INDUSTRIAL
COUNTY LINE	STORE OR SMALL BUSINESS
TOWNSHIP LINE	ESTABLISHMENT
CORPORATE LINE	GAS TANK
SECTION LINE	GROUP OF STORAGE TANKS
MATCH LINE BETWEEN ADJOINING	(OIL OR GAS)
SHEETS OF SAME COUNTY	PUMPING STATION (OIL OR GAS)
BOUNDARY TO MARK	GAUGING OR PUMPING STATION
ENLARGEMENT INSET	WAREHOUSE - GENERAL
NATIONAL REFUGES	GRAIN ELEVATOR
MONUMENT - SMALL HISTORIC SITE	STOCK YARD - LOADING PEN
WILDLIFE MANAGEMENT AREA	OR CORRAL
WATERFOUL PRODUCTION AREA	GRAVEL PIT
STATE SCHOOL LAND	WIND TURBINE
DRAINAGE	CONSERVATION AND RECREATION
INTERMITTENT STREAM (NARROW)	PICNIC GROUND
NARROW STREAM	PLAYGROUND, BALL FIELD, ETC.
WIDE STREAM	BATHING BEACH OR SWIMMING POOL
WIDE STREAM WITH DAM	CAMP SITE, NO PERMANENCE
LAKE, RESERVOIR, OR POND	(TENTS OR TRAILER PARKING)
LAKE, RESERVOIR, OR POND	CAMP OR LODGE
WITH DAM	(PERMANENT SITE WITH BUILDINGS)
MARSH OR SWAMP LAND	SMALL PARK (SP-STATE, CP-COUNTY,
RAILROADS	MP-MUNICIPAL, WP-WAYSIDE PARK)
RAILROAD (ANY NUMBER OF TRACKS	REST AREA
USED BY A SINGLE OPERATING CO.)	GOLF GROUND OR COUNTRY CLUB
RAILROAD STATION	FAIR GROUND, RACE COURSE, SPEEDWAY
RAILROAD GRADE CROSSING	RIFLE CLUB
RAILROAD ABOVE	PUBLIC SERVICE FACILITIES
RAILROAD BELOW	HIGHWAY GARAGE
RAILROAD BRIDGE	GARAGE OR RUBBISH DUMP
STRUCTURES	SEWAGE DISPOSAL PLANT
HIGHWAY BRIDGE, GENERAL	AUTOMOBILE GRAVEYARD
HIGHWAY GRADE SEPARATION	WATER SUPPLY STAND PIPE OR TANK
DAM WITH ROAD	POWER SUBSTATION
MINOR DRAINAGE STRUCTURE	COMMUNICATION TOWER
CITY AND VILLAGE CENTERS	EDUCATIONAL AND CORRECTIONAL
COUNTY SEAT	INSTITUTIONS
OTHER CITIES AND VILLAGES	SCHOOLHOUSE
INCORPORATED CITY OR VILLAGE	TOWNHALL, GRANGE, OR
(GENERALIZED)	COMMUNITY HALL
AIRPORTS	MUSEUM - GENERAL
AIRFIELD, LIMITED FACILITIES	NAVIGATION
LANDING AREA OR STRIP	DOCK, PIER, OR LANDING
	MISCELLANEOUS
	TRIANGULATION STATION
	DOT TO INDICATE LOCATION OF
	ANY CULTURAL FEATURE
	SHOWN OUT OF POSITION
	ALL VACANT CULTURE INDICATED
	BY OPEN SYMBOL
	LATITUDE AND LONGITUDE

FUNCTIONAL CLASSIFICATION

- PRINCIPAL ARTERIAL
- MINOR ARTERIAL
- MAJOR COLLECTOR

REVISION DATE AND CHANGE

07-27-2015 Added 9.1 miles to CMC3527



GENERAL HIGHWAY MAP
PIERCE COUNTY
NORTH DAKOTA

PREPARED BY THE
NORTH DAKOTA DEPARTMENT OF TRANSPORTATION
PLANNING AND ASSET MANAGEMENT DIVISION

IN COOPERATION WITH THE
U.S. DEPARTMENT OF TRANSPORTATION
FEDERAL HIGHWAY ADMINISTRATION

SCALE
1 0.5 0 1 2 3 4 Miles

SCALE FOR ENLARGEMENTS
0 0.25 0.5 Miles

1 0.5 0 1 2 3 4 Kilometers

2021

BASED ON AERIAL PHOTOGRAPHY OF 1954
AERIAL INVENTORY OF 2021

UNIVERSAL TRANSVERSE MERCATOR ZONE 14
NORTH AMERICAN DATUM 83

SHEET 1 OF 2

Notice of Disclaimer
The North Dakota Department of Transportation (NDOT) makes this map available on an "as is" basis as a public service. Under no circumstances does NDOT warrant or certify the information to be free of errors or deficiencies of any kind. NDOT specifically disclaims all warranties, express or implied, including but not limited to the warranties of merchantability and fitness for a particular purpose.