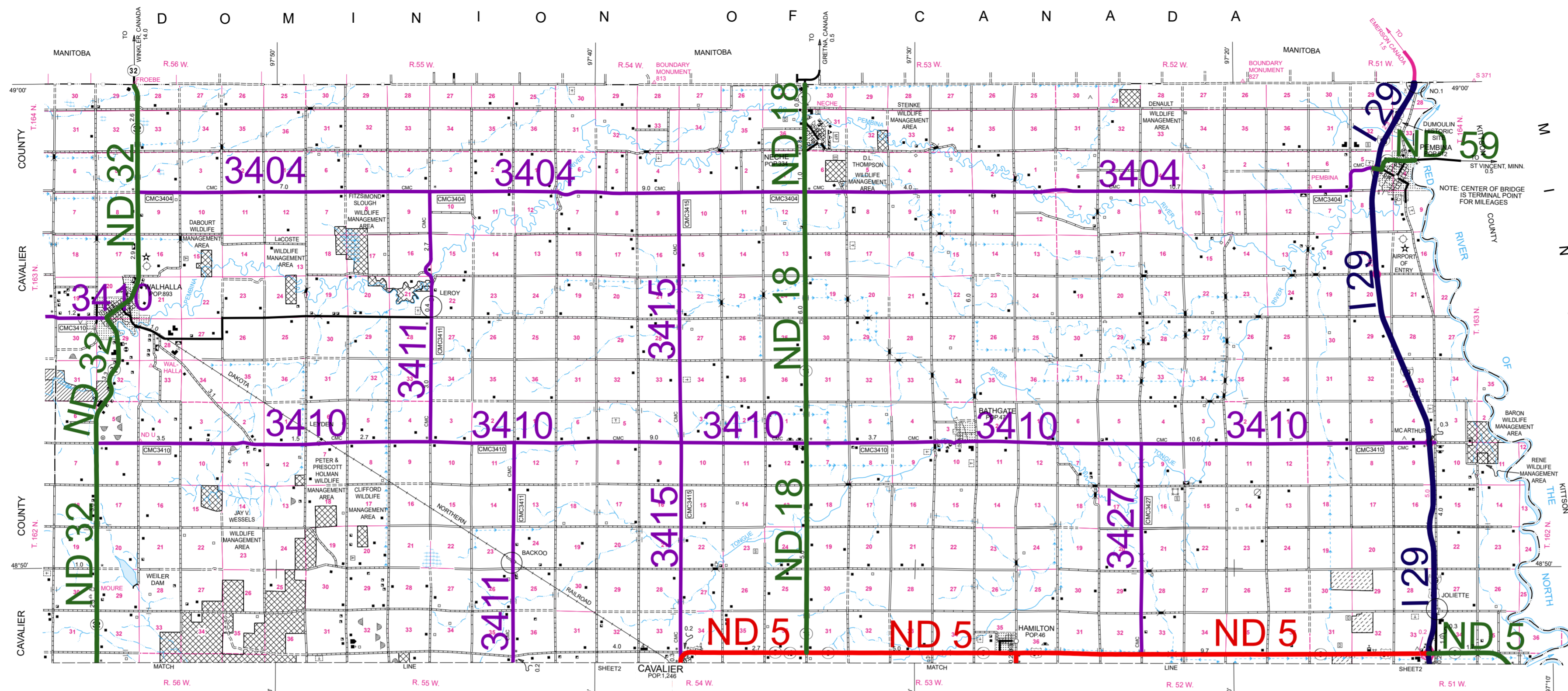
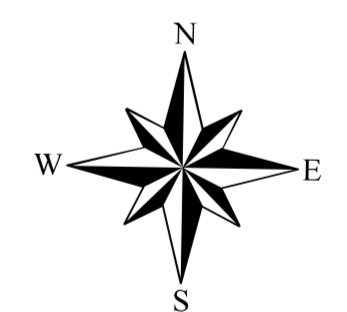
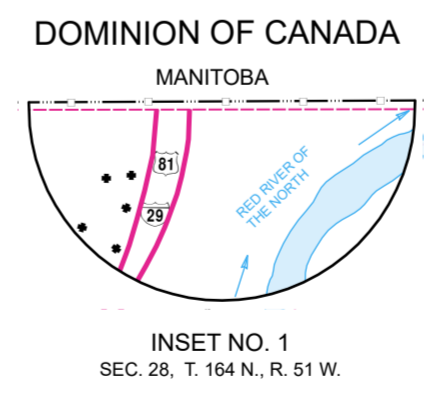
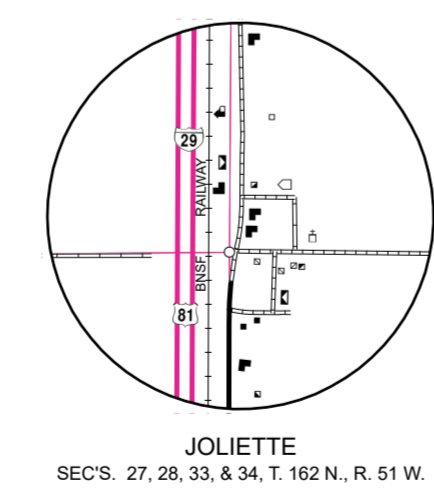
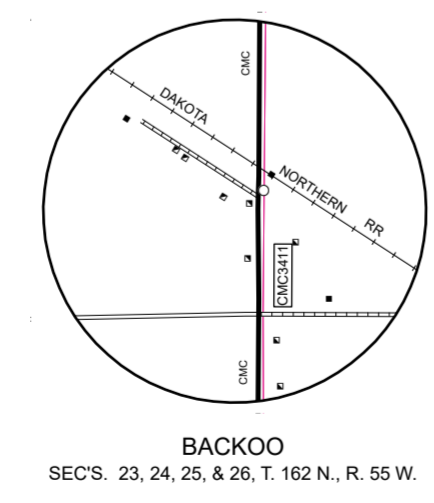
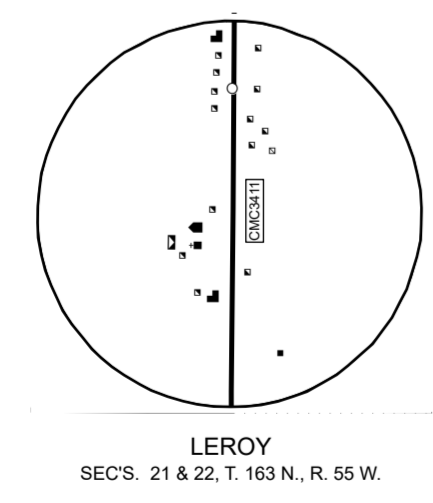


# 2007 FUNCTIONAL CLASSIFICATION



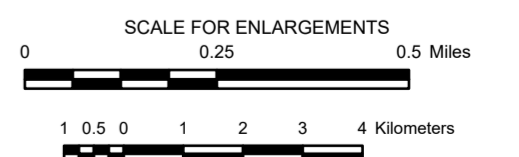
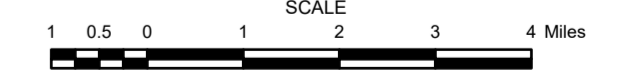
GENERAL LEGEND	
<b>ROADS AND ROADWAY FEATURES</b>	<b>INDUSTRIAL</b>
PRIMITIVE ROAD	STORE OR SMALL BUSINESS ESTABLISHMENT
UNIMPROVED ROAD	FACTORY OR INDUSTRIAL PLANT
GRAVEL GRADED AND DRAINED ROAD	GROUP OF STORAGE TANKS
PAVED ROAD	FILING STATION (OIL OR GAS)
STREETS IN UNINCORPORATED AREAS	PUMPING STATION (OIL OR GAS)
INTERCHANGE	GAUGING OR PUMPING STATION
INDIAN SERVICE ROAD	WAREHOUSE - GENERAL
COUNTY MAJOR COLLECTOR ROUTE NUMBER	GRAIN ELEVATOR
POINTS BETWEEN WHICH DISTANCES ARE MEASURED	BET DUMP
INTERSTATE NUMBERED HIGHWAY	STOCK YARD - LOADING PEN OR CORRAL
U.S. NUMBERED HIGHWAY	GRAVEL PIT
STATE HIGHWAY SYSTEM	GREENHOUSE
	WIND TURBINE
<b>BOUNDARIES</b>	<b>FARM UNITS, DWELLINGS, ETC.</b>
MONUMENTED BOUNDARY MARKER	FARM UNIT (FARM UNITS SHOWN IN MUNICIPAL LIMITS INDICATE FARM BUILDINGS FOR FARM USE)
NATIONAL BOUNDARY LINE	DWELLING OTHER THAN FARM
STATE OR PROVINCE LINE	ROWS OR GROUPS OF DWELLINGS
COUNTY LINE	CLOSELY SPACED (FIGURE DENOTES NUMBER OF DWELLINGS)
TOWNSHIP LINE	SEASONAL OR SUMMER COLONY
CORPORATE LINE	DWELLING
SECTION LINE	CHURCH
MATCH LINE BETWEEN ADJOINING SHEETS OF SAME COUNTY	CEMETERY
BOUNDARY TO MARK ENLARGEMENT INSET	CHURCH WITH CEMETERY ADJACENT
MONUMENT - SMALL, HISTORIC SITE	WELL
WILDLIFE MANAGEMENT AREA	TOLL HOUSE, STATE PORT OF ENTRY, OR WEIGHT STATION
WATERFOWL PRODUCTION AREA	TENANT HOUSE
STATE PARKS	<b>PUBLIC SERVICE FACILITIES</b>
	HIGHWAY GARAGE
<b>DRAINAGE</b>	GARBAGE OR RUBBISH DUMP
INTERMITTENT STREAM (NARROW)	SEWAGE DISPOSAL PLANT
NARROW STREAM	AUTOMOBILE GRAVEYARD
WIDE STREAM	WATER SUPPLY STAND PIPE OR TANK
WIDE STREAM WITH DAM	POWER SUBSTATION
LAKE, RESERVOIR, OR POND	COMMUNICATION TOWER
LAKE, RESERVOIR, OR POND WITH DAM	CANADIAN BORDER CUSTOMS STATION
MARSH OR SWAMP LAND	U.S. BORDER CUSTOMS STATION
DRAINAGE DITCH	<b>CONSERVATION AND RECREATION</b>
	PICNIC GROUND
<b>STRUCTURES</b>	PLAYGROUND, BALL FIELD, ETC.
4 LANE HIGHWAY BRIDGE	BATHING BEACH OR SWIMMING POOL
HIGHWAY BRIDGE, GENERAL	SCENIC SITE
HIGHWAY GRADE SEPARATION	CAMP SITE, NO PERMANENCE (TENTS OR TRAILER PARKING)
DAM WITH ROAD	SMALL PARK (SP-STATE, CP-COUNTY, MP-MUNICIPAL, WP-WAYSIDE PARK)
MINOR DRAINAGE STRUCTURE	GOLF GROUND OR COUNTRY CLUB
	RIFLE CLUB
<b>RAILROADS</b>	<b>EDUCATIONAL AND CORRECTIONAL INSTITUTIONS</b>
RAILROAD (ANY NUMBER OF TRACKS USED BY A SINGLE OPERATING CO.)	SCHOOLHOUSE
RAILROAD STATION	TOWNHALL, GRANGE, OR
RAILROAD GRADE CROSSING	COMMUNITY HALL
RAILROAD ABOVE	MUSEUM - GENERAL
	<b>MISCELLANEOUS</b>
<b>CITY AND VILLAGE CENTERS</b>	TRANSLATION STATION
COUNTY SEAT	FORT, ARMY CAMP, BARRACKS, OR OTHER MILITARY POST
OTHER CITIES AND VILLAGES (GENERALIZED)	DOT TO INDICATE LOCATION OF ANY CULTURAL FEATURE SHOWN OUT OF POSITION
INCORPORATED CITY OR VILLAGE (GENERALIZED)	ALL VACANT CULTURE INDICATED BY OPEN SYMBOL
	LATITUDE AND LONGITUDE
<b>AIRPORTS</b>	
AIRFIELD, LIMITED FACILITIES	
LANDING AREA OR STRIP	
AIRWAY LIGHT BEACON, GENERAL	
<b>NAVIGATION</b>	
DOCK, PIER, OR LANDING	

FUNCTIONAL CLASSIFICATION	
	INTERSTATE
	PRINCIPAL ARTERIAL
	MINOR ARTERIAL
	MAJOR COLLECTOR



## GENERAL HIGHWAY MAP PEMBINA COUNTY NORTH DAKOTA

PREPARED BY THE  
NORTH DAKOTA DEPARTMENT OF TRANSPORTATION  
PLANNING AND ASSET MANAGEMENT DIVISION  
IN COOPERATION WITH THE  
U.S. DEPARTMENT OF TRANSPORTATION  
FEDERAL HIGHWAY ADMINISTRATION



2021

BASED ON AERIAL PHOTOGRAPHY OF 1954  
AERIAL INVENTORY OF 2021  
UNIVERSAL TRANSVERSE MERCATOR ZONE 14  
NORTH AMERICAN DATUM 83

**Notice of Disclaimer**  
The North Dakota Department of Transportation (NDOT) makes this map available on an "as is" basis as a public service. Under no circumstances does NDOT warrant or certify the information to be free of errors or deficiencies of any kind. NDOT specifically disclaims all warranties, express or implied, including but not limited to the warranties of merchantability and fitness for a particular purpose.