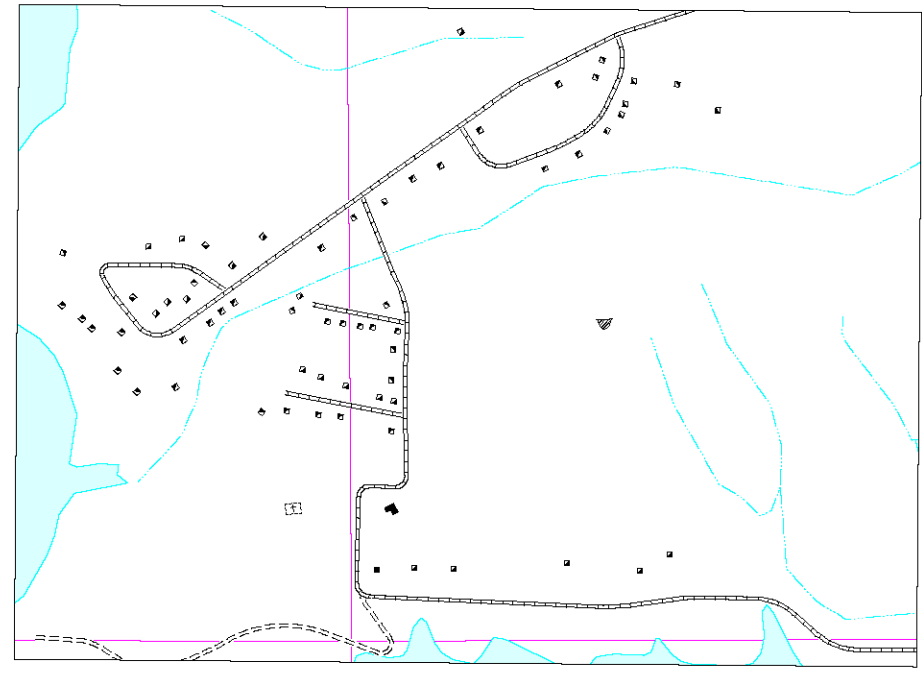
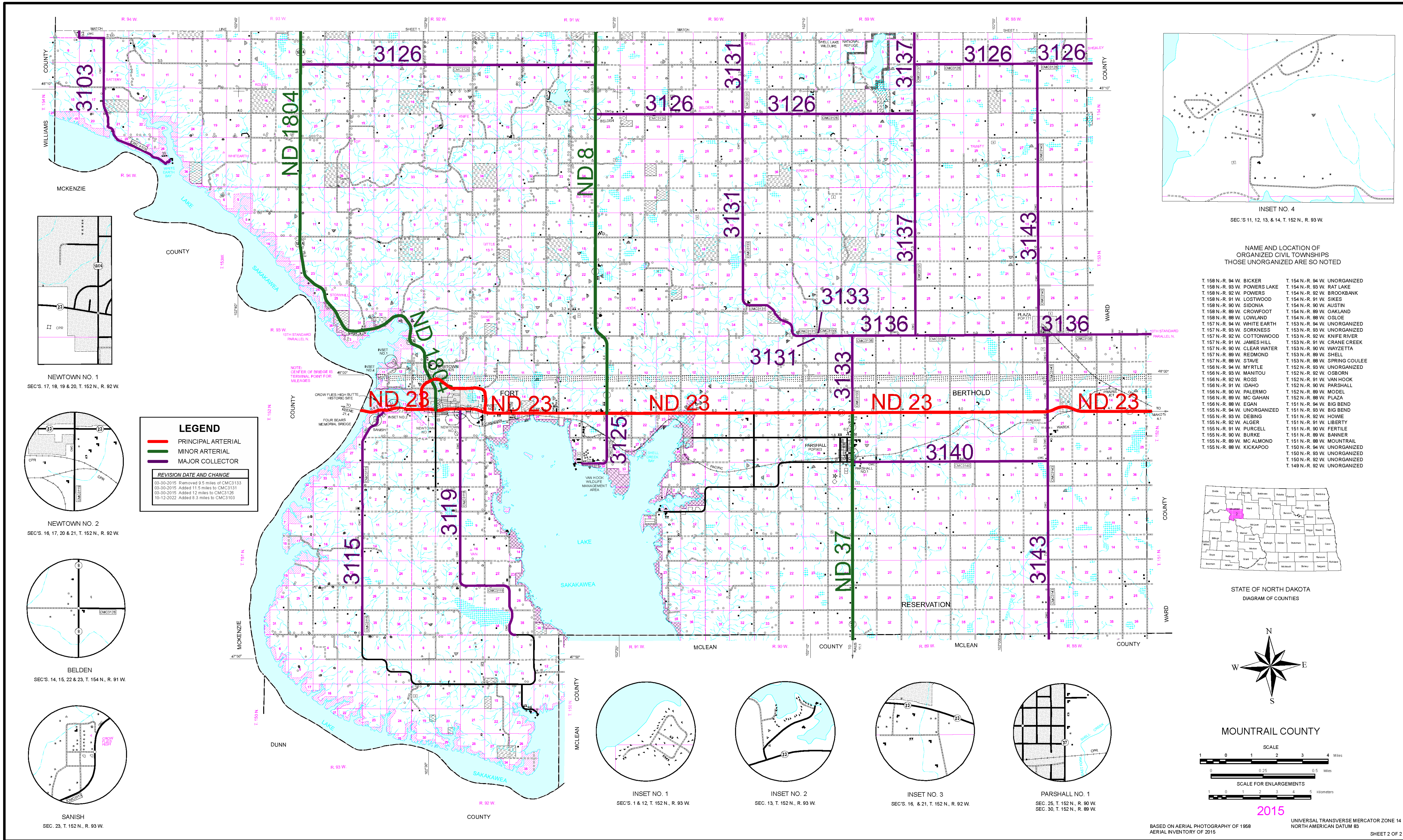


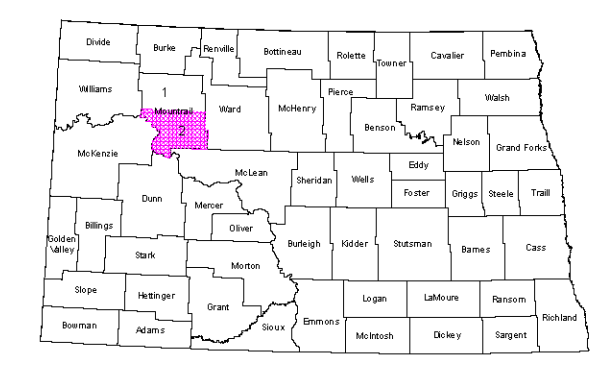
2007 FUNCTIONAL CLASSIFICATION



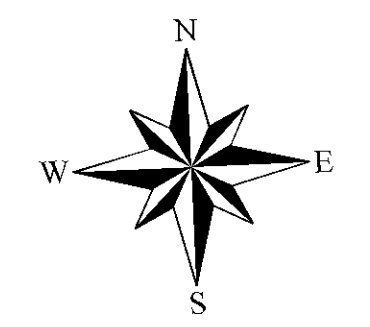
INSET NO. 4
SEC'S 11, 12, 13, & 14, T. 152 N., R. 93 W.

NAME AND LOCATION OF ORGANIZED CIVIL TOWNSHIPS THOSE UNORGANIZED ARE SO NOTED

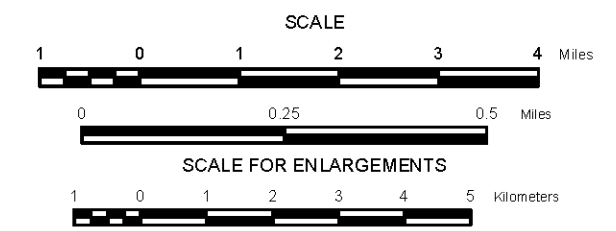
T. 158 N.-R. 94 W. BICKER	T. 154 N.-R. 94 W. UNORGANIZED
T. 158 N.-R. 93 W. POWERS LAKE	T. 154 N.-R. 93 W. RAT LAKE
T. 158 N.-R. 92 W. POWERS	T. 154 N.-R. 92 W. BROOKBANK
T. 158 N.-R. 91 W. LOSTWOOD	T. 154 N.-R. 91 W. SIKES
T. 158 N.-R. 90 W. SIDONIA	T. 154 N.-R. 90 W. AUSTIN
T. 158 N.-R. 89 W. CROWFOOT	T. 154 N.-R. 89 W. OAKLAND
T. 158 N.-R. 88 W. LOWLAND	T. 154 N.-R. 88 W. OSLOE
T. 157 N.-R. 94 W. WHITE EARTH	T. 153 N.-R. 94 W. UNORGANIZED
T. 157 N.-R. 93 W. SORKNESS	T. 153 N.-R. 93 W. UNORGANIZED
T. 157 N.-R. 92 W. COTTONWOOD	T. 153 N.-R. 92 W. KNIFE RIVER
T. 157 N.-R. 91 W. JAMES HILL	T. 153 N.-R. 91 W. CRANE CREEK
T. 157 N.-R. 90 W. CLEAR WATER	T. 153 N.-R. 90 W. WAYZETTA
T. 157 N.-R. 89 W. REDMOND	T. 153 N.-R. 89 W. SHELL
T. 157 N.-R. 88 W. STAVE	T. 153 N.-R. 88 W. SPRING COULEE
T. 156 N.-R. 94 W. MYRTLE	T. 152 N.-R. 94 W. UNORGANIZED
T. 156 N.-R. 93 W. MANITOU	T. 152 N.-R. 93 W. OSBORN
T. 156 N.-R. 92 W. ROSS	T. 152 N.-R. 92 W. VAN HOOK
T. 156 N.-R. 91 W. IDAHO	T. 152 N.-R. 91 W. PARSHALL
T. 156 N.-R. 90 W. PALERMO	T. 152 N.-R. 90 W. MODEL
T. 156 N.-R. 89 W. MC GAHAN	T. 152 N.-R. 89 W. PLAZA
T. 156 N.-R. 88 W. EGAN	T. 151 N.-R. 94 W. BIG BEND
T. 155 N.-R. 94 W. UNORGANIZED	T. 151 N.-R. 93 W. BIG BEND
T. 155 N.-R. 93 W. DEBING	T. 151 N.-R. 92 W. HOWIE
T. 155 N.-R. 92 W. ALGER	T. 151 N.-R. 91 W. LIBERTY
T. 155 N.-R. 91 W. PURCELL	T. 151 N.-R. 90 W. FERTILE
T. 155 N.-R. 90 W. BURKE	T. 151 N.-R. 89 W. BANNER
T. 155 N.-R. 89 W. MC ALMOND	T. 151 N.-R. 88 W. MOUNTRAIL
T. 155 N.-R. 88 W. KICKAPOO	T. 150 N.-R. 94 W. UNORGANIZED
	T. 150 N.-R. 93 W. UNORGANIZED
	T. 150 N.-R. 92 W. UNORGANIZED
	T. 149 N.-R. 92 W. UNORGANIZED



STATE OF NORTH DAKOTA
DIAGRAM OF COUNTIES



MOUNTRAIL COUNTY



2015

BASED ON AERIAL PHOTOGRAPHY OF 1958
AERIAL INVENTORY OF 2015
UNIVERSAL TRANSVERSE MERCATOR ZONE 14
NORTH AMERICAN DATUM 83
SHEET 2 OF 2

Notice of Disclaimer
The North Dakota Department of Transportation (NDDOT) makes this map available on an "as is" basis as a public service. Under no circumstances does NDDOT warrant or certify the information to be free of errors or deficiencies of any kind. NDDOT specifically disclaims all warranties, express or implied, including but not limited to the warranties of merchantability and fitness for a particular purpose. COPIES OF THIS MAP ARE AVAILABLE FOR PUBLIC USE AT A NOMINAL COST FROM: MAP SALES, N.D. DEPT. OF TRANSPORTATION, 608 E. BLVD. AVE., BISMARCK, ND 58505-0700