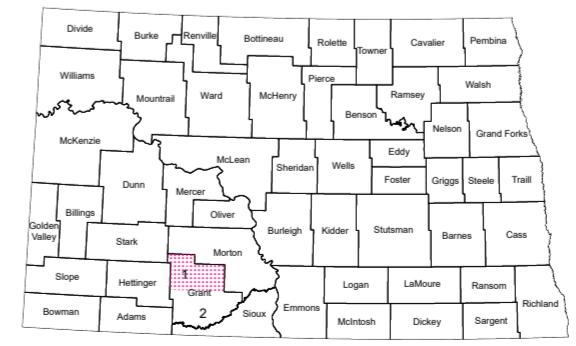
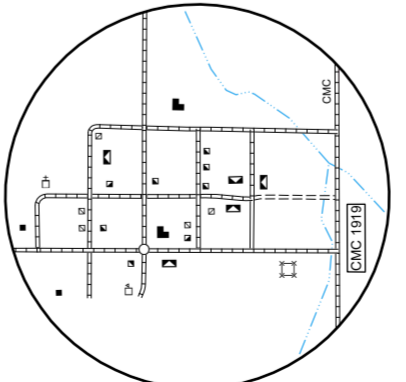
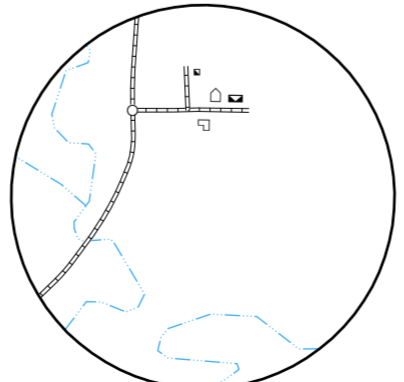
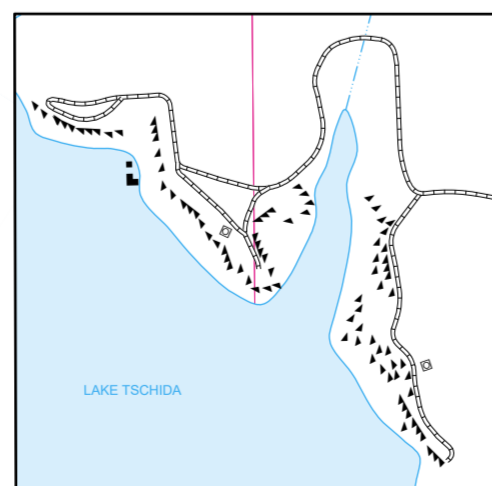
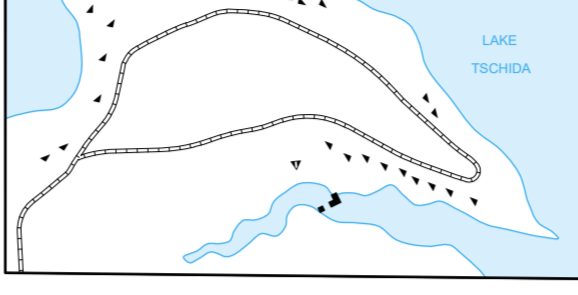
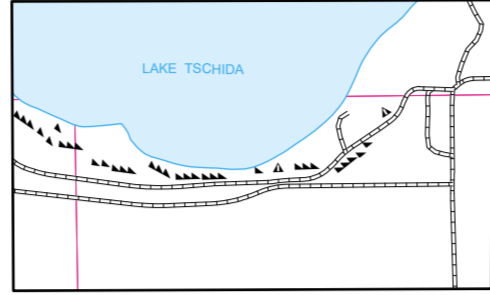
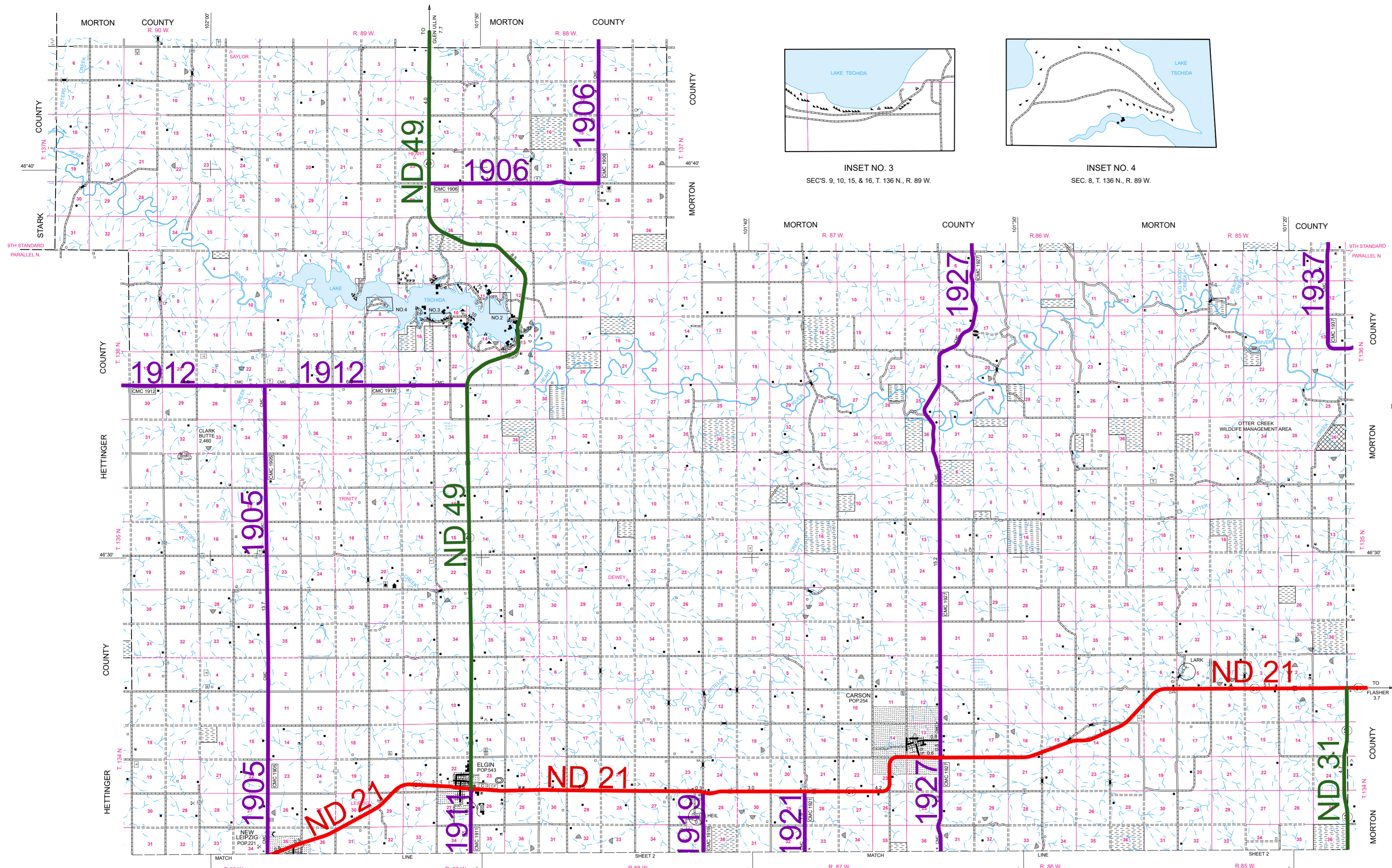
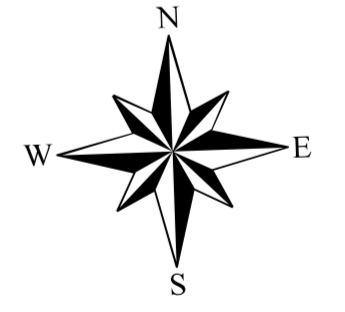


# 2007 FUNCTIONAL CLASSIFICATION



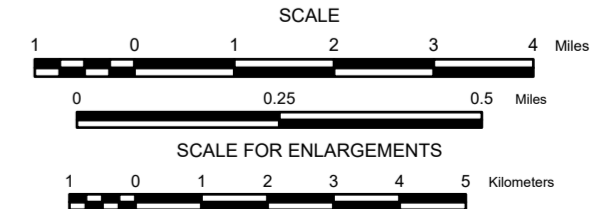
GENERAL LEGEND	
<b>ROADS AND ROADWAY FEATURES</b>	<b>BOUNDARIES</b>
PRIMITIVE ROAD	COUNTY LINE
UNIMPROVED ROAD	TOWNSHIP LINE
GRADED AND DRAINED ROAD	CORPORATE LINE
GRAVEL GRADED AND DRAINED ROAD	SECTION LINE
PAVED ROAD	MATCH LINE BETWEEN ADJOINING SHEETS OF SAME COUNTY
STREETS IN UNINCORPORATED AREAS	BOUNDARY TO MARK ENLARGEMENT INSET
COUNTY MAJOR COLLECTOR	NATIONAL REFUGES
ROUTE NUMBER	WILDLIFE MANAGEMENT AREA
POINTS BETWEEN WHICH DISTANCES ARE MEASURED	STATE SCHOOL LAND
U.S. NUMBERED HIGHWAY	NATIONAL GRASSLANDS
STATE HIGHWAY SYSTEM	
	<b>STRUCTURES</b>
	HIGHWAY BRIDGE, GENERAL
	DAM WITH ROAD
	MINOR DRAINAGE STRUCTURE
	CONCRETE FORD OR DIP
	FORD - ROAD ESTABLISHED
	<b>DRAINAGE</b>
	INTERMITTENT STREAM (NARROW)
	NARROW STREAM
	WIDE STREAM
	WIDE STREAM WITH DAM
	LAKE, RESERVOIR, OR POND
	LAKE, RESERVOIR, OR POND WITH DAM
	MARSH OR SWAMP LAND
	<b>NAVIGATION</b>
	DOCK, PIER, OR LANDING
	<b>NATURAL FEATURES</b>
	PROMINENT ELEVATION - WITH NAME
	<b>EDUCATIONAL AND CORRECTIONAL INSTITUTIONS</b>
	SCHOOLHOUSE
	TOWNHALL, GRANGE, OR COMMUNITY HALL
	<b>CONSERVATION AND RECREATION</b>
	PICNIC GROUND
	PLAYGROUND, BALL FIELD, ETC.
	BATHING BEACH OR SWIMMING POOL
	CAMP OR LODGE
	(PERMANENT SITE WITH BUILDINGS)
	SMALL PARK (SP-STATE, CP-COUNTY, MP-MUNICIPAL, WP-WAYSIDE PARK)
	FAIR GROUND, RACE COURSE, SPEEDWAY
	RIFLE CLUB
	<b>PUBLIC SERVICE FACILITIES</b>
	POST OFFICE
	HIGHWAY GARAGE
	GARAGE OR RUBBISH DUMP
	SEWAGE DISPOSAL PLANT
	AUTOMOBILE GRAVEYARD
	POWER SUBSTATION
	COMMUNICATION TOWER
	<b>INDUSTRIAL</b>
	STORE OR SMALL BUSINESS
	ESTABLISHMENT
	BUSINESS AND POST OFFICE
	GROUP OF STORAGE TANKS (OIL OR GAS)
	WAREHOUSE - GENERAL
	GRAIN ELEVATOR
	GRAVEL PIT
	MINE - SHAFT OR DRIFT (ANY KIND)
	<b>CITY AND VILLAGE CENTERS</b>
	COUNTY SEAT
	OTHER CITIES AND VILLAGES
	INCORPORATED CITY OR VILLAGE (GENERALIZED)
	<b>MISCELLANEOUS</b>
	TRIANGULATION STATION
	DOT TO INDICATE LOCATION OF ANY CULTURAL FEATURE! SHOWN OUT OF POSITION ALL VACANT CULTURE INDICATED BY OPEN SYMBOL
	LATITUDE AND LONGITUDE

LEGEND	
	INTERSTATE
	PRINCIPAL ARTERIAL
	MINOR ARTERIAL
	MAJOR COLLECTOR
<b>REVISION DATE AND CHANGE</b>	
03-10-2011 Removed 8.5 miles of CMC4730	



## GENERAL HIGHWAY MAP GRANT COUNTY NORTH DAKOTA

PREPARED BY THE  
NORTH DAKOTA DEPARTMENT OF TRANSPORTATION  
PLANNING / ASSET MANAGEMENT DIVISION  
IN COOPERATION WITH THE  
U.S. DEPARTMENT OF TRANSPORTATION  
FEDERAL HIGHWAY ADMINISTRATION



2021

BASED ON AERIAL PHOTOGRAPHY OF 1954  
GROUND INVENTORY OF 2011  
AERIAL INVENTORY OF 2011  
UNIVERSAL TRANSVERSE MERCATOR ZONE 14  
NORTH AMERICAN DATUM 83

**Notice of Disclaimer**  
The North Dakota Department of Transportation (NDDOT) makes this map available on an "as is" basis as a public service. Under no circumstances does NDDOT warrant or certify the information to be free of errors or deficiencies of any kind. NDDOT specifically disclaims all warranties, express or implied, including but not limited to the warranties of merchantability and fitness for a particular purpose.

COPIES OF THIS MAP ARE AVAILABLE FOR PUBLIC USE AT A NOMINAL COST FROM:  
MAP SALES, N.D. DEPT. OF TRANSPORTATION, 608 E. BLVD. AVE., BISMARCK, N.D. 58505-0700