

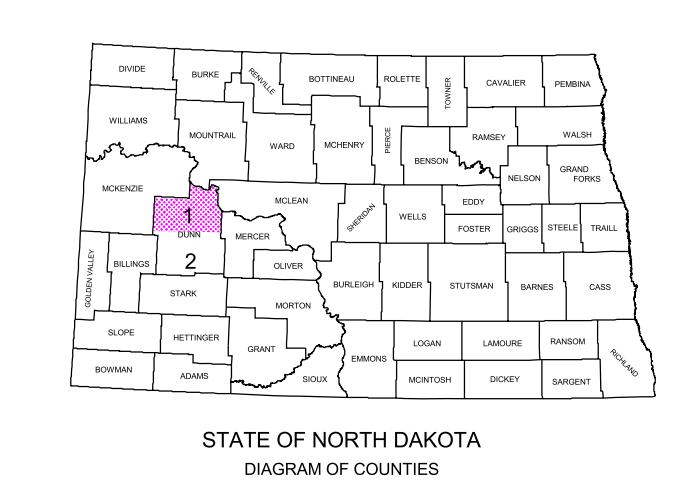
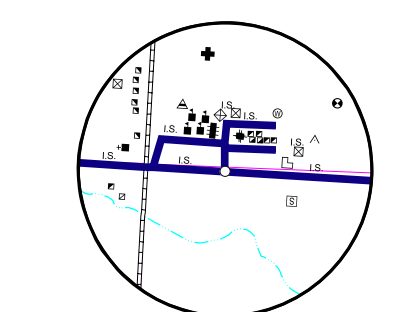
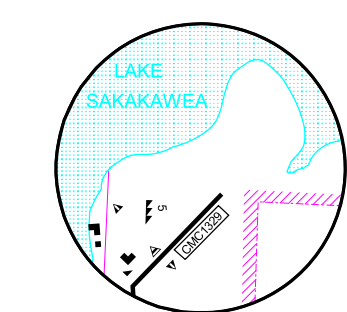
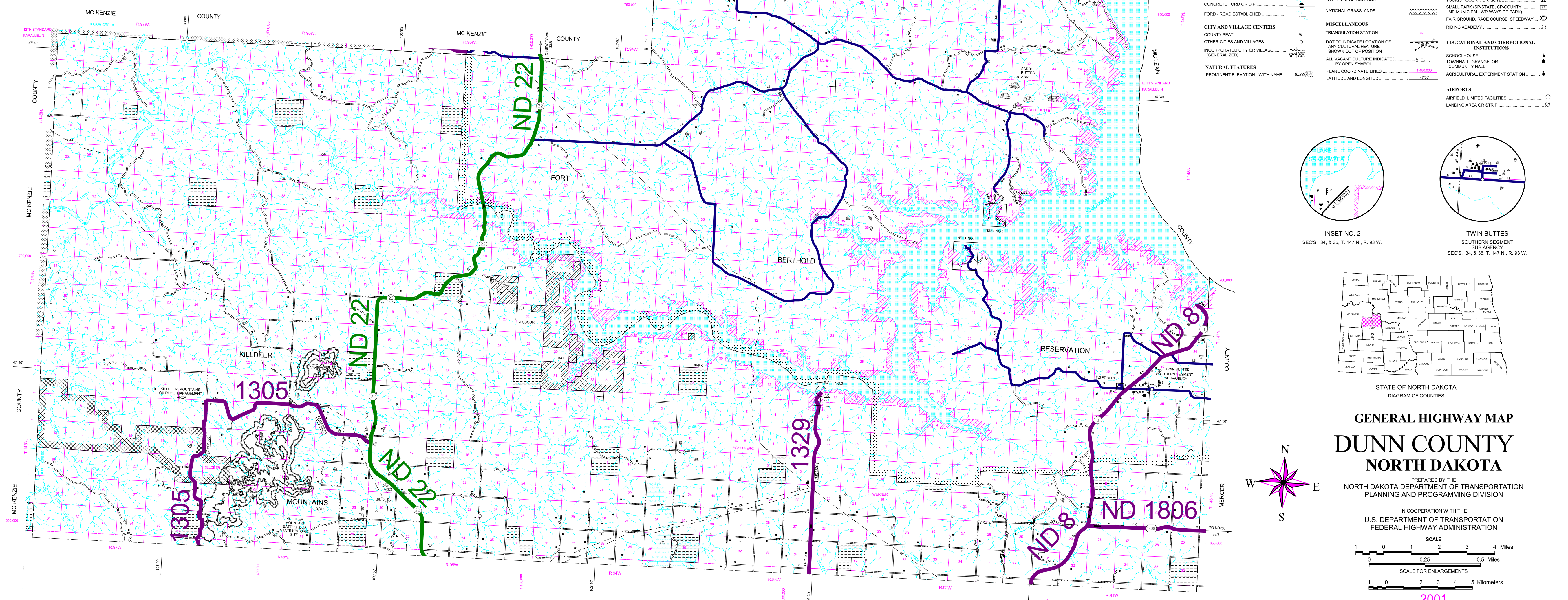
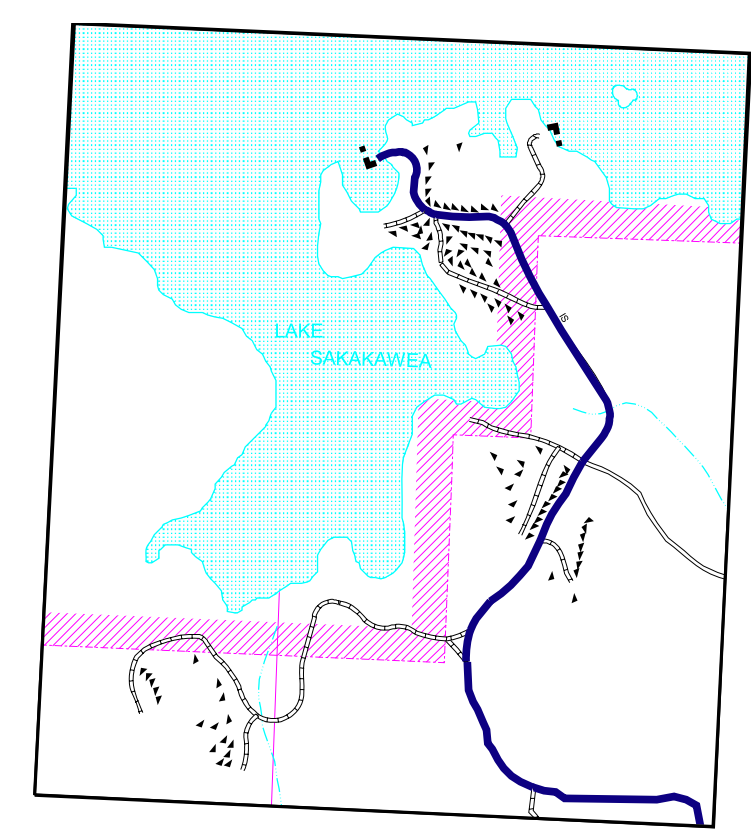
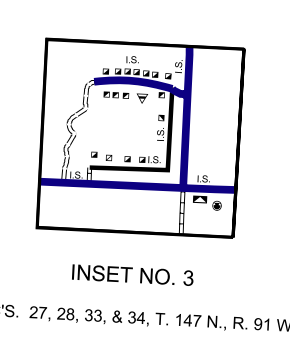
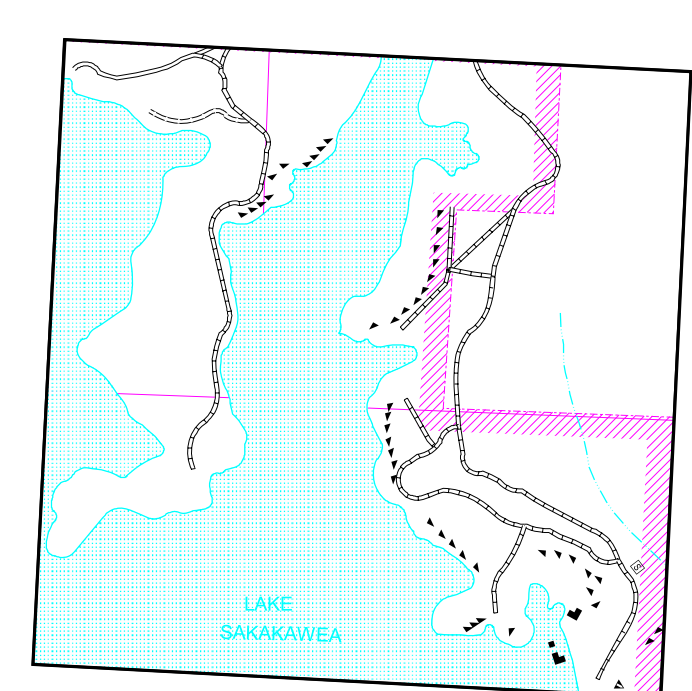
2007 FUNCTIONAL CLASSIFICATION

LEGEND

- PRINCIPAL ARTERIALS
- MINOR ARTERIALS
- MAJOR COLLECTORS
- INDIAN SERVICE ROADS (IS)

GENERAL LEGEND

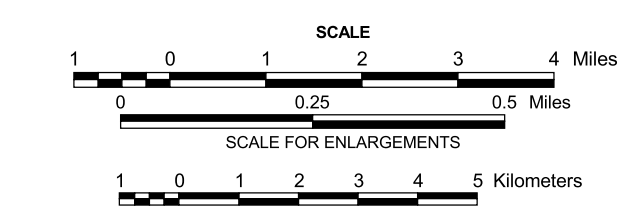
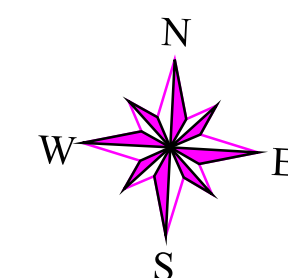
- | | | |
|--|---|--|
| <p>ROADS AND ROADWAY FEATURES</p> <ul style="list-style-type: none"> PRIMITIVE ROAD UNIMPROVED ROAD GRADED AND DRAINED ROAD GRAVEL GRADED AND DRAINED ROAD PAVED ROAD STREETS IN UNINCORPORATED TOWNS INDIAN SERVICE ROAD COUNTY MAJOR COLLECTOR ROUTE NUMBER POINTS BETWEEN WHICH DISTANCES ARE MEASURED INTERSTATE NUMBERED HIGHWAY U.S. NUMBERED HIGHWAY STATE HIGHWAY SYSTEM <p>DRAINAGE</p> <ul style="list-style-type: none"> INTERMITTENT STREAM (NARROW) NARROW STREAM WIDE STREAM WIDE STREAM WITH DAM LAKE, RESERVOIR, OR POND LAKE, RESERVOIR, OR POND WITH DAM MARSH OR SWAMP LAND <p>NAVIGATION</p> <ul style="list-style-type: none"> DOCK, PIER, OR LANDING <p>STRUCTURES</p> <ul style="list-style-type: none"> HIGHWAY BRIDGE, GENERAL HIGHWAY GRADE SEPARATION DAM WITH ROAD MINOR DRAINAGE STRUCTURE CONCRETE FORD OR DIP FORD - ROAD ESTABLISHED <p>CITY AND VILLAGE CENTERS</p> <ul style="list-style-type: none"> COUNTY SEAT OTHER CITIES AND VILLAGES INCORPORATED CITY OR VILLAGE (GENERALIZED) <p>NATURAL FEATURES</p> <ul style="list-style-type: none"> PROMINENT ELEVATION - WITH NAME | <p>INDUSTRIAL</p> <ul style="list-style-type: none"> STORE OR SMALL BUSINESS ESTABLISHMENT GROUP OF STORAGE TANKS (OIL OR GAS) PUMPING STATION (OIL OR GAS) GAUGING OR PUMPING STATION FILLING STATION GAS TANK WAREHOUSE - GENERAL GRAVEL PIT OIL OR GAS WELL MINE - SHAFT OR DRIFT (ANY KIND) SAWMILL (STATIONARY) <p>BOUNDARIES</p> <ul style="list-style-type: none"> COUNTY LINE TOWNSHIP LINE CORPORATE LINE SECTION LINE MATCH LINE BETWEEN ADJOINING SHEETS OF SAME COUNTY BOUNDARY TO MARK SPICES NATIONAL REFUGES MONUMENT - SMALL HISTORIC SITE WILDLIFE MANAGEMENT AREA WATERFOWL PRODUCTION AREA STATE PARKS STATE SCHOOL LAND RESERVOIR BOUNDARY (TAKING LINE) NATIONAL PARKS AND OTHER RESERVATIONS NATIONAL GRASSLANDS <p>MISCELLANEOUS</p> <ul style="list-style-type: none"> TRIANGULATION STATION DOT TO INDICATE LOCATION OF ANY CULTURAL FEATURE SHOWN OUT OF POSITION ALL VACANT CULTURE INDICATED BY OPEN SYMBOL PLANE COORDINATE LINES, LATITUDE AND LONGITUDE | <p>PUBLIC SERVICE FACILITIES</p> <ul style="list-style-type: none"> POST OFFICE GARBAGE OR RUBBISH DUMP SEWAGE DISPOSAL PLANT WATER SUPPLY STAND PIPE OR TANK PIPE LINE, GAS PIPE LINE, OIL TRANSMISSION LINE GAS TANK WAREHOUSE - GENERAL COMMUNICATION TOWER MUNICIPAL BUILDING COURTHOUSE <p>FARM UNITS, DWELLINGS, ETC.</p> <ul style="list-style-type: none"> FARM UNIT (FARM UNITS SHOWN IN MUNICIPAL LIMITS INDICATE FARM BUILDINGS FOR FARM USE) DWELLING OTHER THAN FARM BARRACKS, OR DORMATORIES FOR STUDENTS, WORKERS, MIGRANTS, ETC. SEASONAL OR SUMMER COLONY DWELLING SEASONAL DWELLINGS CLOSELY SPACED HOTEL OR INN CHURCH CEMETERY CHURCH WITH CEMETERY ADJACENT HOSPITAL TENANT HOUSE <p>CONSERVATION AND RECREATION</p> <ul style="list-style-type: none"> PICNIC GROUND PLAYGROUND, BALL FIELD, ETC. TOURIST COURT, OR MOTEL SMALL PARK (SP-STATE, CP-COUNTY, MP-MUNICIPAL, WP-WAYSIDE PARK) FAIR GROUND, RACE COURSE, SPEEDWAY RIDING ACADEMY <p>EDUCATIONAL AND CORRECTIONAL INSTITUTIONS</p> <ul style="list-style-type: none"> SCHOOLHOUSE TOWNHALL, GRANGE, OR COMMUNITY HALL AGRICULTURAL EXPERIMENT STATION <p>AIRPORTS</p> <ul style="list-style-type: none"> AIRFIELD, LIMITED FACILITIES LANDING AREA OR STRIP |
|--|---|--|



GENERAL HIGHWAY MAP DUNN COUNTY NORTH DAKOTA

PREPARED BY THE
NORTH DAKOTA DEPARTMENT OF TRANSPORTATION
PLANNING AND PROGRAMMING DIVISION

IN COOPERATION WITH THE
U.S. DEPARTMENT OF TRANSPORTATION
FEDERAL HIGHWAY ADMINISTRATION



2001

COPIES OF THIS MAP ARE AVAILABLE FOR PUBLIC USE AT A NOMINAL COST FROM:
ADDRESS: MAP SALES, N.D. DEPT. OF TRANSPORTATION, 608 E. BLVD. AVE., BISMARCK, N.D. 58505-0700
f:\planning\arcview\stevem\cmbook.....

BASED ON AERIAL PHOTOGRAPHY OF 1958
GROUND INVENTORY OF 2001
AERIAL INVENTORY OF 1995

UNIVERSAL TRANSVERSE MERCATOR ZONE 14
NORTH AMERICAN DATUM 83
(50,000 FOOT INTERVAL)

SHEET 1 OF 2