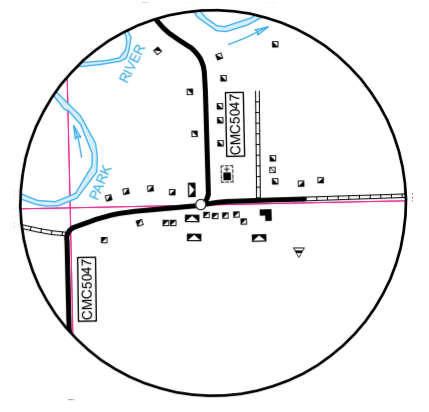
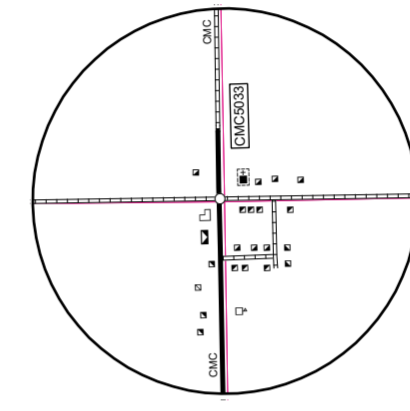


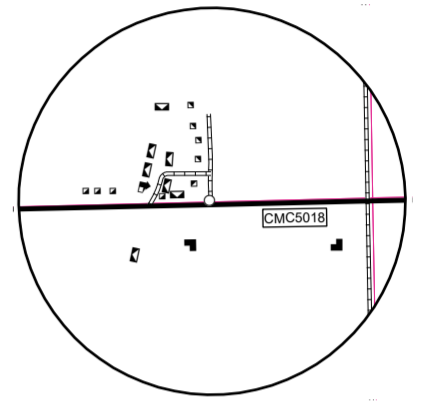
CASHEL
SECS. 23, 24, 25, & 26, T. 158 N., R. 52 W.



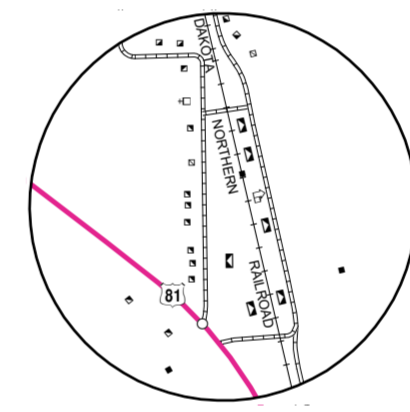
OAKWOOD
SECS. 11, 12, 13 & 14, T. 157 N., R. 52 W.



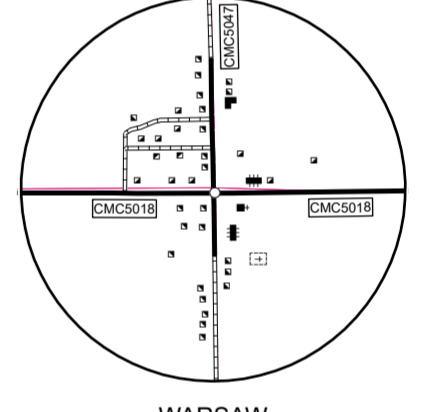
VESELEVILLE
SECS. 14, 15, 22 & 23, T. 156 N., R. 54 W.



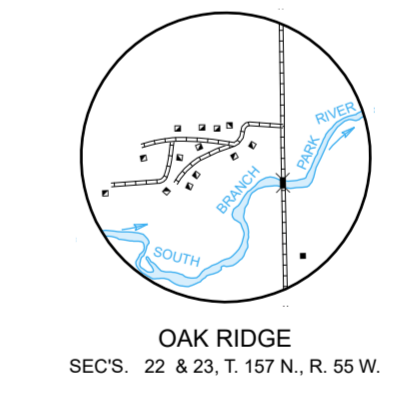
VOSS
SECS. 27, 28, 33 & 34, T. 156 N., R. 53 W.



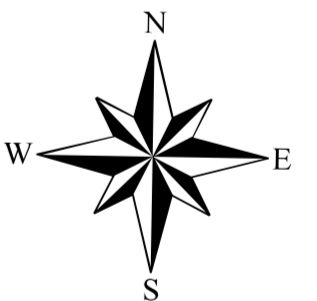
AUBURN
SEC. 14, T. 158 N., R. 53 W.



WARSAW
SECS. 30 & 31, T. 156 N., R. 51 W.
SECS. 25 & 36, T. 156 N., R. 52 W.



OAK RIDGE
SECS. 22 & 23, T. 157 N., R. 55 W.



GENERAL HIGHWAY MAP WALSH COUNTY NORTH DAKOTA

PREPARED BY THE
NORTH DAKOTA DEPARTMENT OF TRANSPORTATION
PLANNING AND ASSET MANAGEMENT DIVISION

IN COOPERATION WITH THE
U.S. DEPARTMENT OF TRANSPORTATION
FEDERAL HIGHWAY ADMINISTRATION

SCALE
1 0.5 0 1 2 3 4 Miles

SCALE FOR ENLARGEMENTS
0 0.25 0.5 Miles

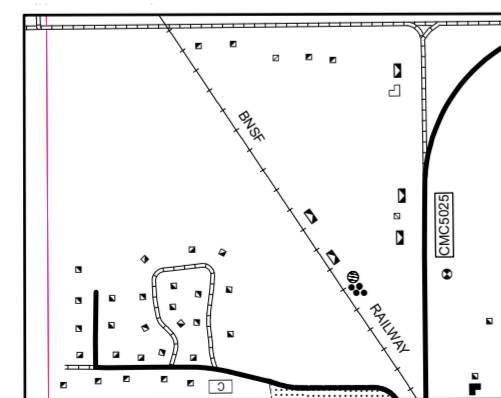
1 0.5 0 1 2 3 4 Kilometers

2022

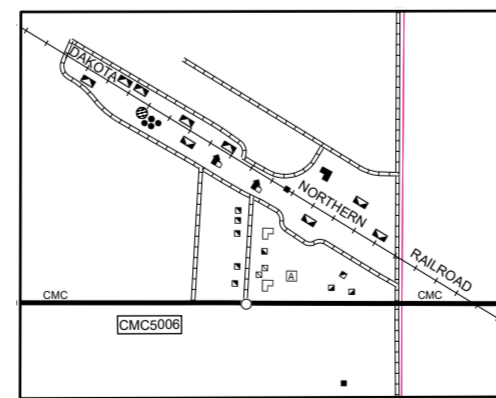
BASED ON AERIAL PHOTOGRAPHY OF 1993
GROUND INVENTORY OF 2012
AERIAL INVENTORY OF 2022

UNIVERSAL TRANSVERSE MERCATOR ZONE 14
NORTH AMERICAN DATUM 83

SHEET 2 OF 2



INSET NO. 1
SECS. 16 & 21, T. 157 N., R. 55 W.



NASH
SECS. 29, 30, 31 & 32, T. 158 N., R. 53 W.



STATE OF NORTH DAKOTA
DIAGRAM OF COUNTIES

Notice of Disclaimer
The North Dakota Department of Transportation (NDOT) makes this map available on an "as is" basis as a public service. Under no circumstances does NDOT warrant or certify the information to be free of errors or deficiencies of any kind. NDOT specifically disclaims all warranties, express or implied, including but not limited to the warranties of merchantability and fitness for a particular purpose.