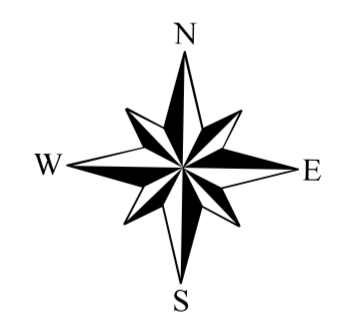
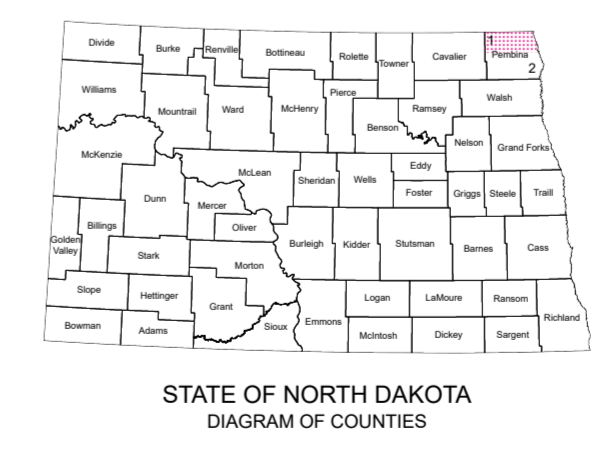
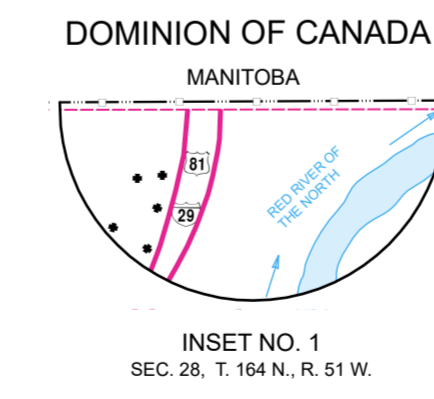
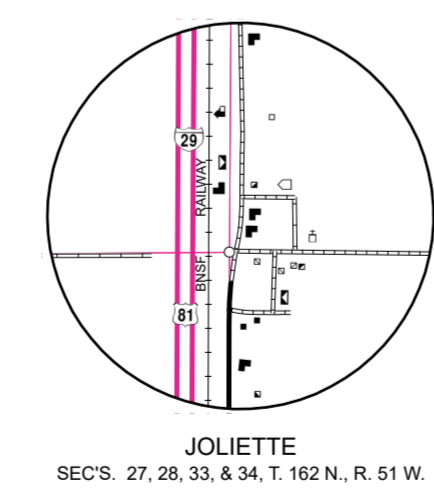
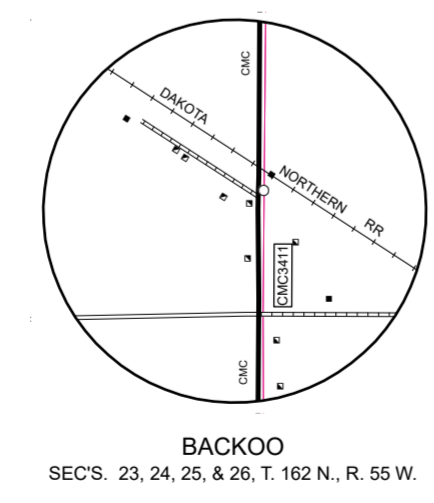
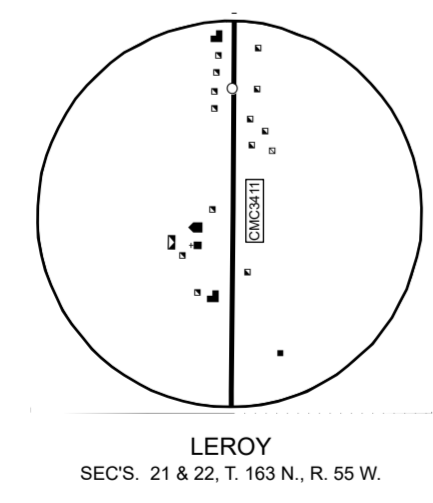


GENERAL LEGEND

ROADS AND ROADWAY FEATURES	INDUSTRIAL
PRIMITIVE ROAD	STORE OR SMALL BUSINESS ESTABLISHMENT
UNIMPROVED ROAD	FACTORY OR INDUSTRIAL PLANT
GRAVEL GRADED AND DRAINED ROAD	GROUP OF STORAGE TANKS (OIL OR GAS)
PAVED ROAD	FILLING STATION
STREETS IN UNINCORPORATED AREAS	PUMPING STATION (OIL OR GAS)
INTERCHANGE	GAUGING OR PUMPING STATION
INDIAN SERVICE ROAD	WAREHOUSE - GENERAL
COUNTY MAJOR COLLECTOR ROUTE NUMBER	GRAIN ELEVATOR
POINTS BETWEEN WHICH DISTANCES ARE MEASURED	BET DUMP
INTERSTATE NUMBERED HIGHWAY	STOCK YARD - LOADING PEN OR CORRAL
U.S. NUMBERED HIGHWAY	GRAVEL PIT
STATE HIGHWAY SYSTEM	GREENHOUSE
	WIND TURBINE
BOUNDARIES	FARM UNITS, DWELLINGS, ETC.
MONUMENTED BOUNDARY MARKER	FARM UNIT (FARM UNITS SHOWN IN MUNICIPAL LIMITS INDICATE FARM BUILDINGS FOR FARM USE)
NATIONAL BOUNDARY LINE	DWELLING OTHER THAN FARM
STATE OR PROVINCE LINE	ROWS OR GROUPS OF DWELLINGS
COUNTY LINE	CLOSELY SPACED (FIGURE DENOTES NUMBER OF DWELLINGS)
TOWNSHIP LINE	SEASONAL OR SUMMER COLONY
CORPORATE LINE	DWELLING
SECTION LINE	CHURCH
MATCH LINE BETWEEN ADJOINING SHEETS OF SAME COUNTY	CEMETERY
BOUNDARY TO MARK ENLARGEMENT INSET	CHURCH WITH CEMETERY ADJACENT
MONUMENT - SMALL HISTORIC SITE	WELL
WILDLIFE MANAGEMENT AREA	TOLL HOUSE, STATE PORT OF ENTRY, OR WEIGHT STATION
WATERFOWL PRODUCTION AREA	TENANT HOUSE
STATE PARKS	PUBLIC SERVICE FACILITIES
DRAINAGE	HIGHWAY GARAGE
INTERMITTENT STREAM (NARROW)	GARBAGE OR RUBBISH DUMP
NARROW STREAM	SEWAGE DISPOSAL PLANT
WIDE STREAM	AUTOMOBILE GRAVEYARD
WIDE STREAM WITH DAM	WATER SUPPLY STAND PIPE OR TANK
LAKE, RESERVOIR, OR POND	POWER SUBSTATION
LAKE, RESERVOIR, OR POND WITH DAM	COMMUNICATION TOWER
MARSH OR SWAMP LAND	CANADIAN BORDER CUSTOMS STATION
DRAINAGE DITCH	U.S. BORDER CUSTOMS STATION
STRUCTURES	CONSERVATION AND RECREATION
4 LANE HIGHWAY BRIDGE	PICNIC GROUND
HIGHWAY BRIDGE, GENERAL	PLAYGROUND, BALL FIELD, ETC.
HIGHWAY GRADE SEPARATION	BATHING BEACH OR SWIMMING POOL
DAM WITH ROAD	SCENIC SITE
MINOR DRAINAGE STRUCTURE	CAMP SITE, NO PERMANENCE (TENTS OR TRAILER PARKING)
RAILROADS	SMALL PARK (SP-STATE, CP-COUNTY, MP-MUNICIPAL, WP-WAYSIDE PARK)
RAILROAD (ANY NUMBER OF TRACKS USED BY A SINGLE OPERATING CO.)	GOLF GROUND OR COUNTRY CLUB
RAILROAD STATION	RIFLE CLUB
RAILROAD GRADE CROSSING	EDUCATIONAL AND CORRECTIONAL INSTITUTIONS
RAILROAD ABOVE	SCHOOLHOUSE
CITY AND VILLAGE CENTERS	TOWNHALL, GRANGE, OR MUSEUM - GENERAL
COUNTY SEAT	MISCELLANEOUS
OTHER CITIES AND VILLAGES	TRANSLATION STATION
INCORPORATED CITY OR VILLAGE (GENERALIZED)	FORT, ARMY CAMP, BARRACKS, OR OTHER MILITARY POST
AIRPORTS	DOT TO INDICATE LOCATION OF ANY CULTURAL FEATURE SHOWN OUT OF POSITION
AIRFIELD, LIMITED FACILITIES	ALL VACANT CULTURE INDICATED BY OPEN SYMBOL
LANDING AREA OR STRIP	LATITUDE AND LONGITUDE
AIRWAY LIGHT BEACON, GENERAL	
NAVIGATION	
DOCK, PIER, OR LANDING	



GENERAL HIGHWAY MAP
PEMBINA COUNTY
NORTH DAKOTA

PREPARED BY THE
NORTH DAKOTA DEPARTMENT OF TRANSPORTATION
PLANNING AND ASSET MANAGEMENT DIVISION
IN COOPERATION WITH THE
U.S. DEPARTMENT OF TRANSPORTATION
FEDERAL HIGHWAY ADMINISTRATION



2021

BASED ON AERIAL PHOTOGRAPHY OF 1954
AERIAL INVENTORY OF 2021
UNIVERSAL TRANSVERSE MERCATOR ZONE 14
NORTH AMERICAN DATUM 83

Notice of Disclaimer
The North Dakota Department of Transportation (NDOT) makes this map available on an "as is" basis as a public service. Under no circumstances does NDOT warrant or certify the information to be free of errors or deficiencies of any kind. NDOT specifically disclaims all warranties, express or implied, including but not limited to the warranties of merchantability and fitness for a particular purpose.