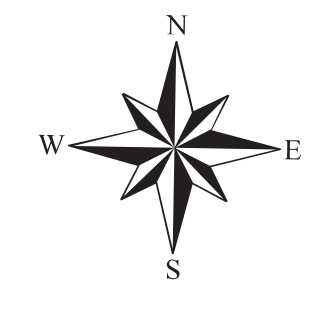
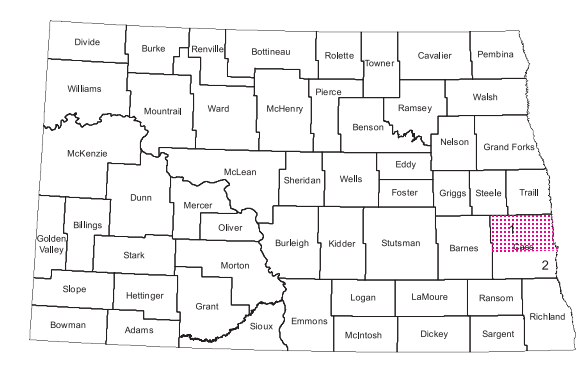
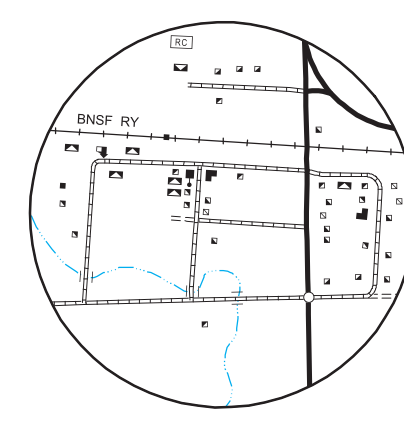
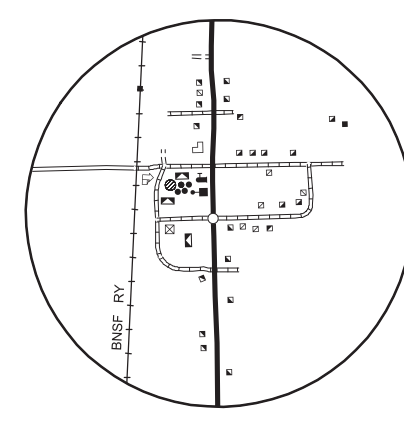
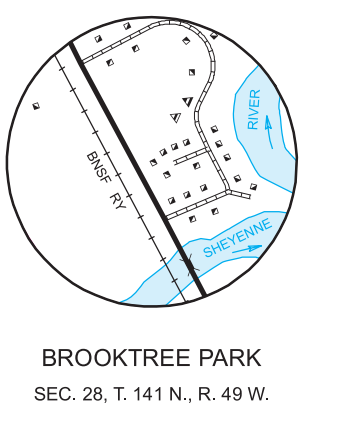
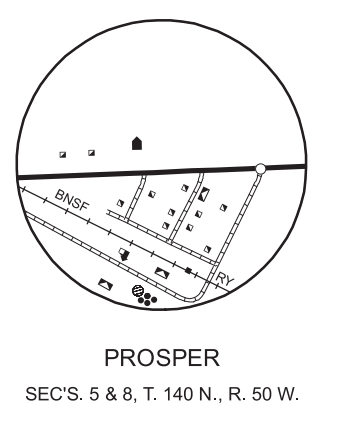
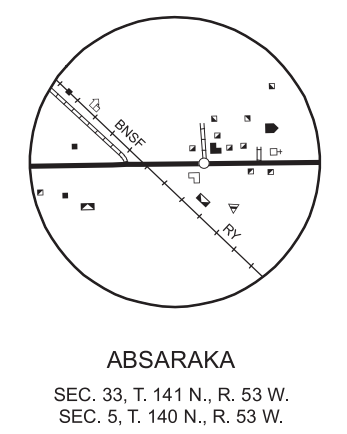


GENERAL LEGEND

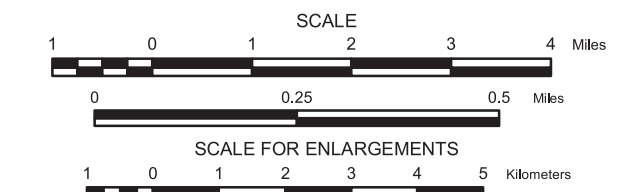
ROADS AND ROADWAY FEATURES	INDUSTRIAL
PRIMITIVE ROAD	STORE OR SMALL BUSINESS
GRADED AND DRAINED ROAD	ESTABLISHMENT
GRAVEL GRADED AND DRAINED ROAD	BUSINESS AND POST OFFICE
PAVED ROAD	FACTORY OR INDUSTRIAL PLANT
STREETS IN UNINCORPORATED AREAS	GAS TANK
INTERCHANGE	GROUP OF STORAGE TANKS
COUNTY MAJOR COLLECTOR	FILLING STATION (OIL OR GAS)
ROUTE NUMBER	PUMPING STATION (OIL OR GAS)
POINTS BETWEEN WHICH DISTANCES ARE MEASURED	GAUGING OR PUMPING STATION
INTERSTATE NUMBERED HIGHWAY	WAREHOUSE - GENERAL
U.S. NUMBERED HIGHWAY	GRAIN ELEVATOR
STATE HIGHWAY SYSTEM	BET DUMP
	STOCK YARD - LOADING PEN
	OR CORRAL
	GRAVEL PIT
	VALVE HOUSE
	WIND TURBINE
STRUCTURES	EDUCATIONAL AND CORRECTIONAL INSTITUTIONS
HIGHWAY BRIDGE, GENERAL	SCHOOLHOUSE
HIGHWAY GRADE SEPARATION	TOWNHALL, GRANGE, OR COMMUNITY HALL
DAM WITH ROAD	AGRICULTURAL EXPERIMENT STATION
MINOR DRAINAGE STRUCTURE	
CONCRETE FORD OR DIP	FARM UNITS, DWELLINGS, ETC.
FORD - ROAD ESTABLISHED	FARM UNIT (FARM UNITS SHOWN IN MUNICIPAL LIMITS INDICATE FARM BUILDINGS FOR FARM USE)
	DWELLING OTHER THAN FARM
	ROWS OR GROUPS OF DWELLINGS
	CLOSELY SPACED (FIGURE DENOTES NUMBER OF DWELLINGS)
	SEASONAL OR SUMMER COLONY
	DWELLING
	SEASONAL DWELLINGS CLOSELY SPACED
	CHURCH
	CEMETERY
	CHURCH WITH CEMETERY ADJACENT
	WELL
	TOLL HOUSE, STATE PORT OF ENTRY, OR WEIGHT STATION
	TENANT HOUSE
RAILROADS	CITY AND VILLAGE CENTERS
RAILROAD (ANY NUMBER OF TRACKS USED BY A SINGLE OPERATING CO.)	COUNTY SEAT
RAILROAD STATION	OTHER CITIES AND VILLAGES
RAILROAD GRADE CROSSING	INCORPORATED CITY OR VILLAGE (GENERALIZED)
RAILROAD ABOVE	
RAILROAD BELOW	PUBLIC SERVICE FACILITIES
	POST OFFICE
AIRPORTS	HIGHWAY GARAGE
AIRPORT, COMPLETE FACILITIES	GARBAGE OR RUBBISH DUMP
AIRFIELD, LIMITED FACILITIES	SEWAGE DISPOSAL PLANT
LANDING AREA OR STRIP	SANITARY FILL
	AUTOMOBILE GRAVEYARD
AIRPORT, GENERAL	INCINERATOR
	SCRAP BUILDING MATERIAL
	SCRAP METAL
BOUNDARIES	WATER SUPPLY STAND PIPE OR TANK
STATE OR PROVINCE LINE	POWER SUBSTATION
COUNTY LINE	BROADCASTING STATION (RADIO OR TV)
TOWNSHIP LINE	COMMUNICATION TOWER
CORPORATE LINE	
SECTION LINE	DRAINAGE
MATCH LINE BETWEEN ADJOINING SHEETS OF SAME COUNTY	INTERMITTENT STREAM (NARROW)
BOUNDARY TO MARK ENLARGEMENT INSET	NARROW STREAM
	WIDE STREAM
	WIDE STREAM WITH DAM
	LAKE, RESERVOIR, OR POND
	LAKE, RESERVOIR, OR POND WITH DAM
	MARSH OR SWAMP LAND
	DRAINAGE DITCH
	NAVIGATION
	DOCK, PIER, OR LANDING
	MISCELLANEOUS
	TRIANGULATION STATION
	DOT TO INDICATE LOCATION OF ANY CULTURAL FEATURE SHOWN OUT OF POSITION
	ALL VACANT CULTURE INDICATED BY OPEN SYMBOL
	LATITUDE AND LONGITUDE



GENERAL HIGHWAY MAP CASS COUNTY NORTH DAKOTA

PREPARED BY THE
NORTH DAKOTA DEPARTMENT OF TRANSPORTATION
PLANNING / ASSET MANAGEMENT DIVISION

IN COOPERATION WITH THE
U.S. DEPARTMENT OF TRANSPORTATION
FEDERAL HIGHWAY ADMINISTRATION



2016

BASED ON AERIAL PHOTOGRAPHY OF 1954
AERIAL INVENTORY OF 2016
UNIVERSAL TRANSVERSE MERCATOR ZONE 14
NORTH AMERICAN DATUM 83

Notice of Disclaimer
The North Dakota Department of Transportation (NDDOT) makes this map available on an "as is" basis as a public service. Under no circumstances does NDDOT warrant or certify the information to be free of errors or deficiencies of any kind. NDDOT specifically disclaims all warranties, express or implied, including but not limited to the warranties of merchantability and fitness for a particular purpose.

COPIES OF THIS MAP ARE AVAILABLE FOR PUBLIC USE AT A NOMINAL COST FROM:
MAP SALES, N.D. DEPT. OF TRANSPORTATION, 608 E. BLVD. AVE., BISMARCK, N.D. 58505-0700