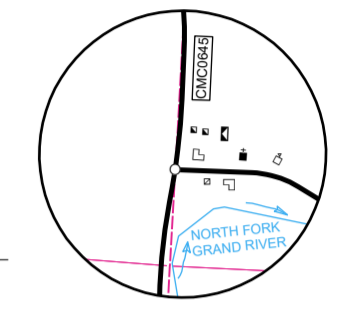
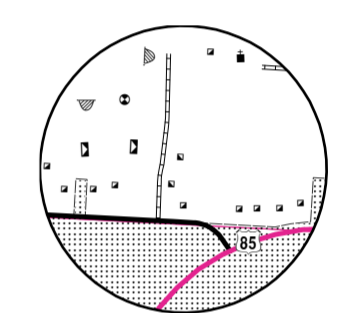


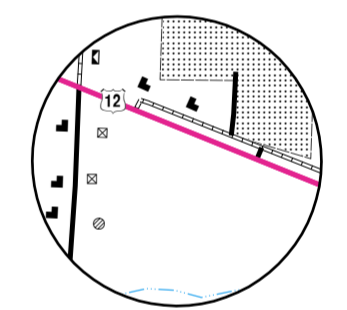
BUFFALO SPRINGS
SECS. 7 & 18, T. 131 N., R. 100 W.



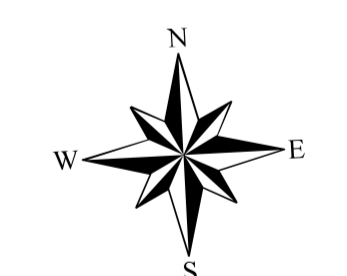
HALEY
SECS. 25 & 36, T. 129 N., R. 100 W.
SECS. 30 & 31, T. 129 N., R. 99 W.



BOWMAN NO. 1
SECS. 2 & 11, T. 131 N., R. 102 W.



BOWMAN NO. 3
SECS. 9 & 10, T. 131 N., R. 102 W.



NAME AND LOCATION OF ORGANIZED CIVIL TOWNSHIPS THOSE UNORGANIZED ARE SO NOTED

T. 132 N.-R. 107 W. UNORGANIZED	T. 130 N.-R. 107 W. UNORGANIZED
T. 132 N.-R. 106 W. UNORGANIZED	T. 130 N.-R. 106 W. UNORGANIZED
T. 132 N.-R. 105 W. UNORGANIZED	T. 130 N.-R. 105 W. UNORGANIZED
T. 132 N.-R. 104 W. RHAME	T. 130 N.-R. 104 W. NEBO
T. 132 N.-R. 103 W. MARION	T. 130 N.-R. 103 W. AMOR
T. 132 N.-R. 102 W. STAR	T. 130 N.-R. 102 W. GEM
T. 132 N.-R. 101 W. GRAINBELT	T. 130 N.-R. 101 W. BOYSEN
T. 132 N.-R. 100 W. STILLWATER	T. 130 N.-R. 100 W. WALKER
T. 132 N.-R. 99 W. BUENA VISTA	T. 130 N.-R. 99 W. GASCOYNE
T. 131 N.-R. 107 W. SUNNY SLOPE	T. 129 N.-R. 107 W. UNORGANIZED
T. 131 N.-R. 106 W. SUNNY SLOPE	T. 129 N.-R. 106 W. UNORGANIZED
T. 131 N.-R. 105 W. UNORGANIZED	T. 129 N.-R. 105 W. UNORGANIZED
T. 131 N.-R. 104 W. ADELAIDE	T. 129 N.-R. 104 W. LANGBERG
T. 131 N.-R. 103 W. HART	T. 129 N.-R. 103 W. GRAND RIVER
T. 131 N.-R. 102 W. BOWMAN	T. 129 N.-R. 102 W. LADD
T. 131 N.-R. 101 W. TALBOT	T. 129 N.-R. 101 W. MINNEHAHA
T. 131 N.-R. 100 W. SCRANTON	T. 129 N.-R. 100 W. GOLDFIELD
T. 131 N.-R. 99 W. FISCHBEIN	T. 129 N.-R. 99 W. HALEY

ROADS AND ROADWAY FEATURES

PRIMITIVE ROAD	UNIMPROVED ROAD
GRAVEL GRADED ROAD	GRAVEL GRADED AND DRAINED ROAD
PAVED ROAD	STREETS IN UNINCORPORATED AREAS
COUNTY MAJOR COLLECTOR ROUTE NUMBER	STATE HIGHWAY SYSTEM

STRUCTURES

HIGHWAY BRIDGE, GENERAL	DAM WITH ROAD
MINOR DRAINAGE STRUCTURE	CONCRETE FORD OR DIP
FORD - ROAD ESTABLISHED	

CITY AND VILLAGE CENTERS

COUNTY SEAT	OTHER CITIES AND VILLAGES
INCORPORATED CITY OR VILLAGE (GENERALIZED)	

GENERAL LEGEND

INDUSTRIAL STORE OR SMALL BUSINESS ESTABLISHMENT	FARM UNITS, DWELLINGS, ETC. FARM UNIT (FARM UNITS SHOWN IN MUNICIPAL LIMITS INDICATE FARM BUILDINGS FOR FARM USE)
FACTORY OR INDUSTRIAL PLANT	DWELLING OTHER THAN FARM
OIL TANK	ROWS OR GROUPS OF DWELLINGS
GAS TANK	CLOSELY SPACED (FIGURE DENOTES NUMBER OF DWELLINGS)
GROUP OF STORAGE TANKS (OIL OR GAS)	PUMPING STATION (OIL OR GAS)
GAUGING OR PUMPING STATION	WAREHOUSE - GENERAL
WAREHOUSE - CORRAL	GRAN ELEVATOR
STOCK YARD - LOADING PEN	GRAVEL PIT
OIL OR GAS WELL	MINE - SHAFT OR DRIFT (ANY KIND)
WIND TURBINE	

EDUCATIONAL AND CORRECTIONAL INSTITUTIONS

SCHOOLHOUSE	TOWNHALL, GRANGE, OR COMMUNITY HALL

NATURAL FEATURES

PROMINENT ELEVATION - WITH NAME	
---------------------------------	--

PUBLIC SERVICE FACILITIES

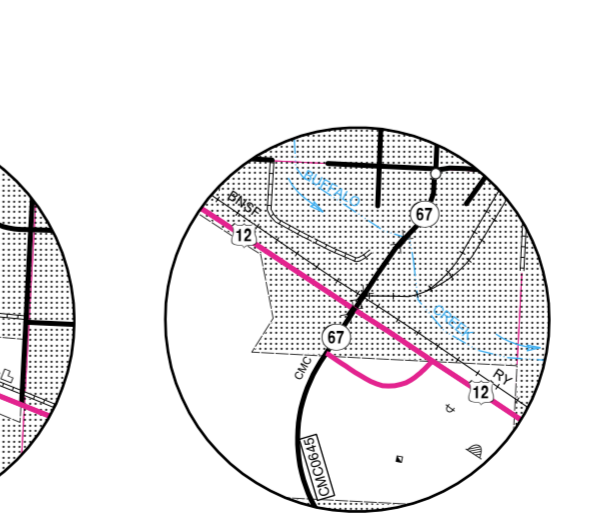
HIGHWAY GARAGE	GARBAGE OR RUBBISH DUMP
SEWAGE DISPOSAL PLANT	AUTOMOBILE GRAVEYARD
WATER SUPPLY STAND PIPE OR TANK	POWER SUBSTATION
COMMUNICATION TOWER	

CONSERVATION AND RECREATION

PICNIC GROUND	BATHING BEACH OR SWIMMING POOL
CAMP SITE, NO PERMANENCE (TENTS OR TRAILER PARKING)	GOLF GROUND OR COUNTRY CLUB
FAIR GROUND, RACE COURSE, SPEEDWAY	RIFLE CLUB

MISCELLANEOUS

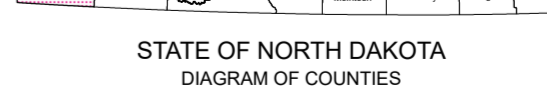
TRIANGULATION STATION	DOT TO INDICATE LOCATION OF ANY CULTURAL FEATURE
SHOWN OUT OF POSITION	ALL VACANT CULTURE INDICATED BY OPEN SYMBOL
LATITUDE AND LONGITUDE	



BOWMAN NO. 2
SECS. 10, 11, & 15, T. 131 N., R. 102 W.



SCRANTON NO. 1
SECS. 23, 25, & 26, T. 131 N., R. 100 W.

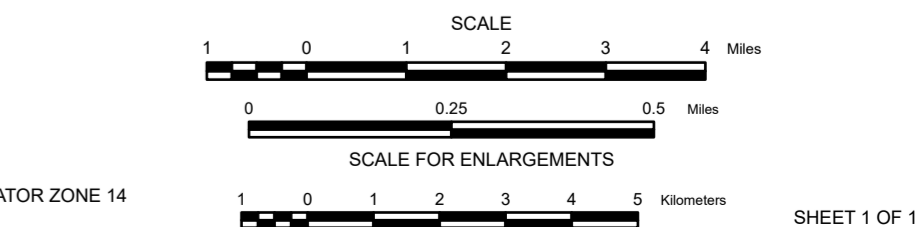


STATE OF NORTH DAKOTA
DIAGRAM OF COUNTIES

GENERAL HIGHWAY MAP
BOWMAN COUNTY
NORTH DAKOTA

PREPARED BY THE
NORTH DAKOTA DEPARTMENT OF TRANSPORTATION
PLANNING AND ASSET MANAGEMENT DIVISION

IN COOPERATION WITH THE
U.S. DEPARTMENT OF TRANSPORTATION
FEDERAL HIGHWAY ADMINISTRATION



BASED ON AERIAL PHOTOGRAPHY OF 1957
AERIAL INVENTORY OF 2020
UNIVERSAL TRANSVERSE MERCATOR ZONE 14
NORTH AMERICAN DATUM 83