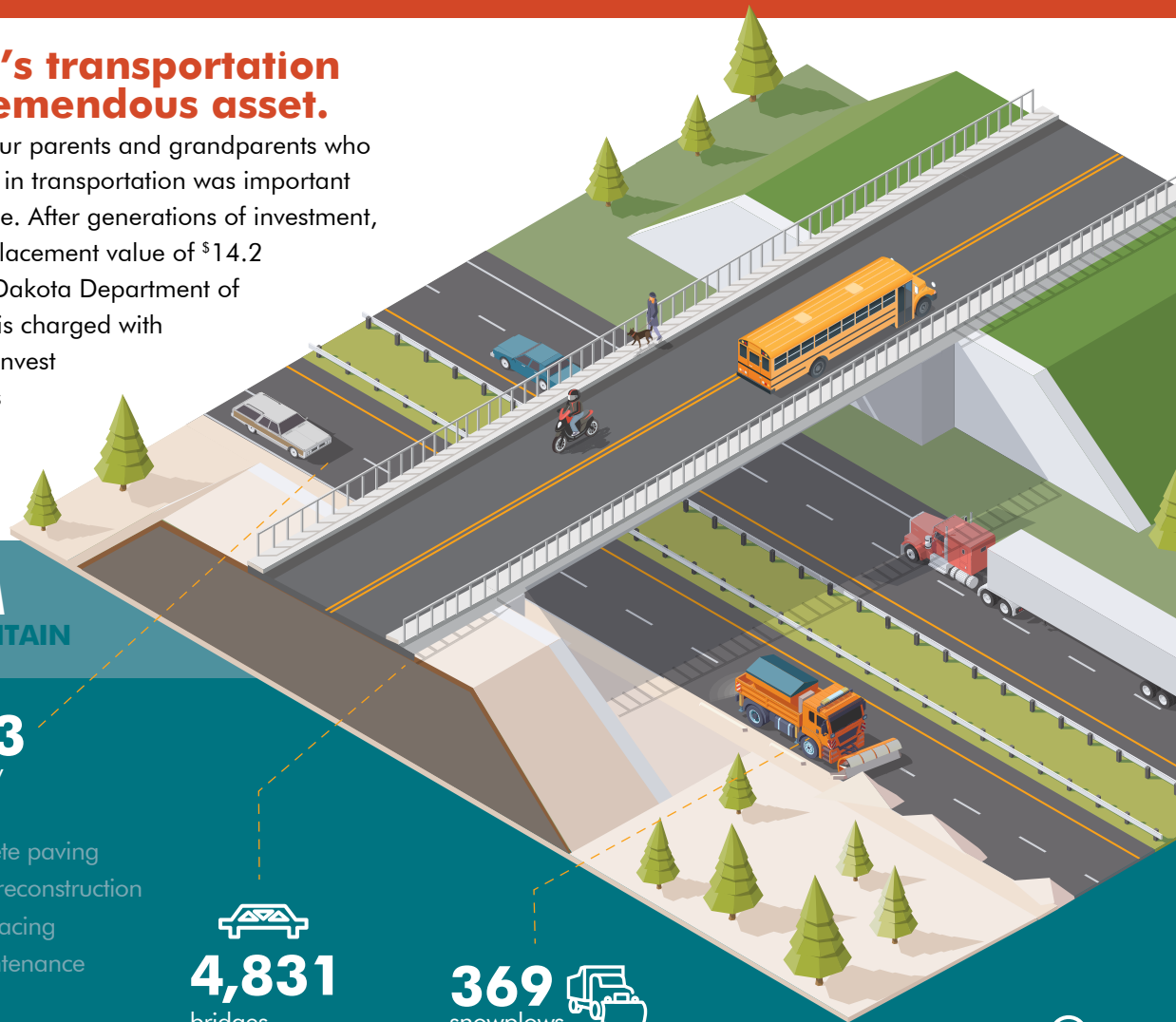


North Dakota's transportation system is a tremendous asset.

The system was built by our parents and grandparents who understood that investing in transportation was important for them and for the future. After generations of investment, the system now has a replacement value of \$14.2 billion. Today, the North Dakota Department of Transportation (NDDOT) is charged with determining how we will invest to ensure that it continues to be an asset for decades to come.



OUR SYSTEM AND COSTS TO MAINTAIN

106,103
miles of roadway

FOR EACH MILE

- \$2.5M** interstate concrete paving
- \$1.6M** major roadway reconstruction
- \$1.0M** pavement resurfacing
- \$210K** preventive maintenance

IN 2022
209 construction projects completed
\$564M project investments

4,831 bridges
\$450K for each bridge replacement and repair

369 snowplows
36 tow plows, 14 rotary snow blowers, 63 payloaders and 16 motor graders
\$23.6M snow and ice control each winter

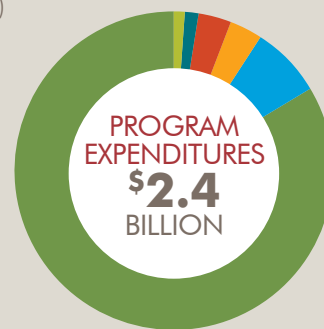
8 North Dakota DOT districts

FUNDING SOURCES AND PROGRAM EXPENDITURES

2021-2023 BIENNIAL BUDGET



- 0.2%** Unmanned Aircraft System Program (SB 2018)
- 0.8%** Misc. H/W Fund Revenue
- 2.1%** Borrowing (SB 2012 Section 6)
- 2.4%** Local Government Reimbursements
- 2.8%** Fleet Revenue
- 2.9%** Bonding (HB 1431)
- 3.2%** License, Fees, Permits
- 4.6%** Motor Vehicle Revenue
- 9.7%** Fuel Taxes
- 10.4%** One-Time Non-Recurring State Funds
- 12.0%** COVID-19 & American Rescue Plan Act
- 48.9%** Federal Revenue

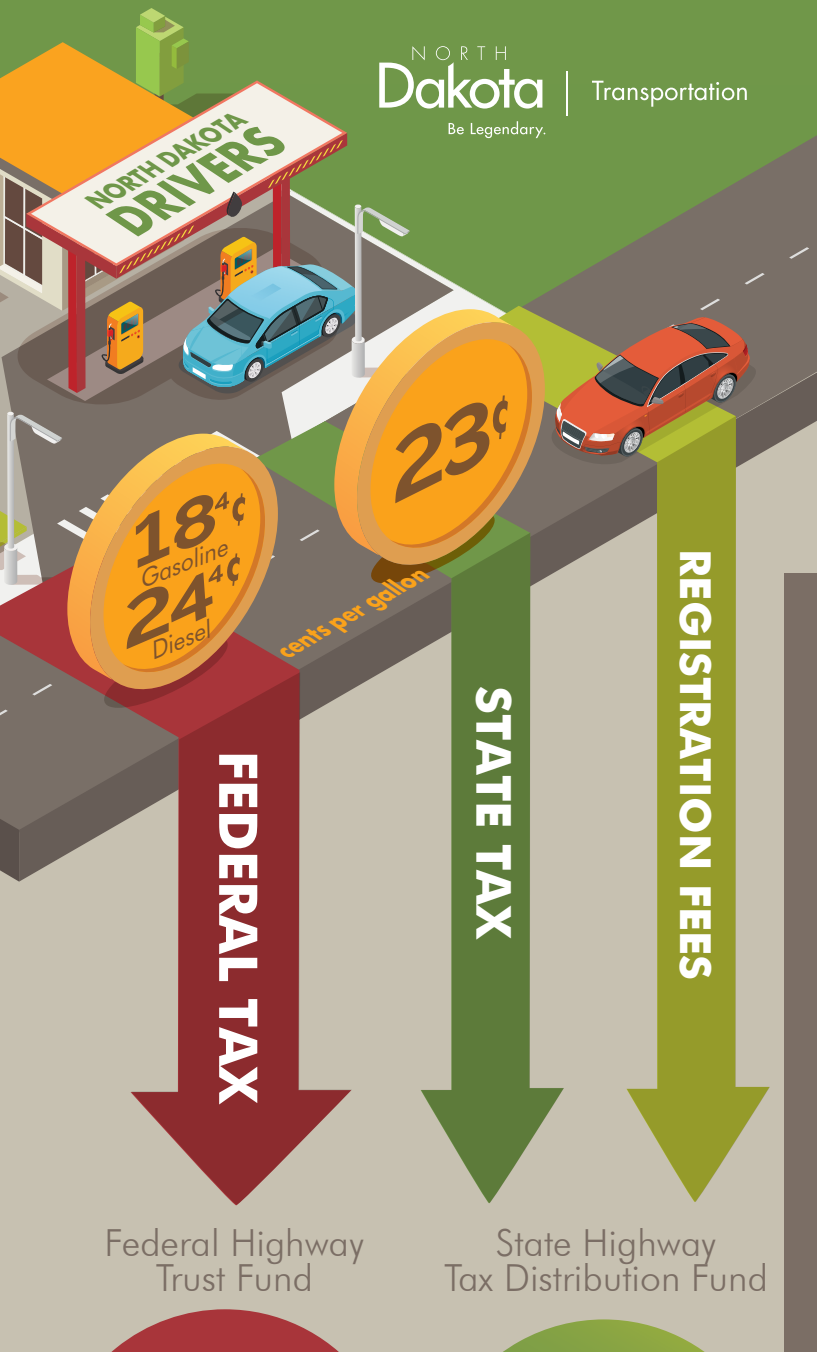



- 1.3%** Driver License
- 1.4%** Motor Vehicle
- 3.3%** Administrative
- 3.3%** State Fleet
- 7.3%** Maintenance
- 83.4%** Highway

HOW ARE WE FUNDED?

Both Federal and State dollars fund the NDDOT.

It all starts with the fuel tax. For each gallon of gas you purchase, 18.4 cents goes to the Federal Highway Trust Fund and 23 cents to the State Highway Tax Distribution Fund. From there, both funds distribute dollars to county, city, township, transit entities, and the largest portion being directed to fund the NDDOT. This allows us to fund the majority of our \$1.9 billion dollar budget.





Misc. fees, Permits, and other state revenue and funding sources

+

NDDOT BUDGET
APPROXIMATELY
\$2.4B
per biennium

This budget is utilized to invest in infrastructure like roads and bridges, alternative transportation, freight, DMV registration services, snow and ice control, maintenance, and safety. Here are just a few ways we serve our customers.



982
team members
across 8 districts



52
self-serve
kiosks



561,000
licensed drivers




215,853
license, permit,
& ID cards




15,317
road tests



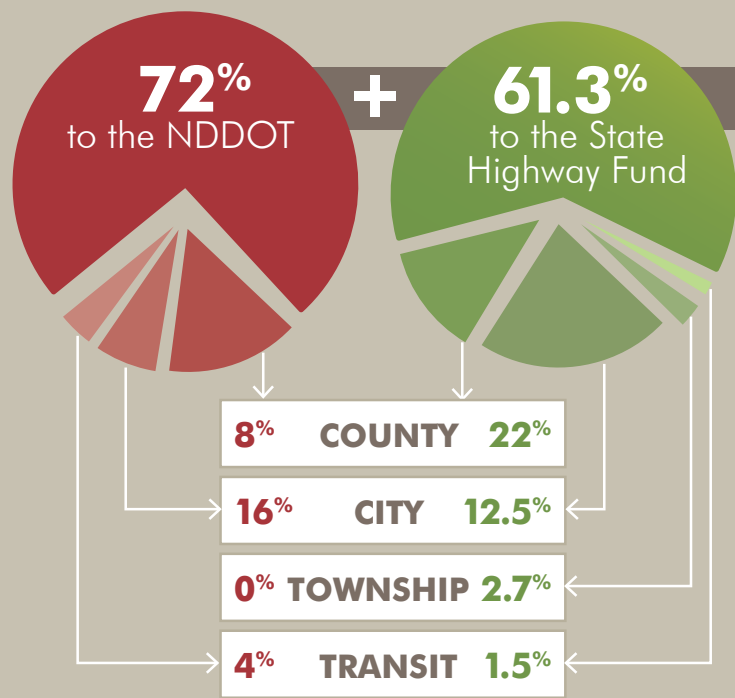
35,108
written tests



1.2M
motor vehicle
registrations



1.3M
motor vehicle
transactions



Performance, budget, & the 1¢ fuel tax.

The NDDOT is ranked #1 in the country for performance and cost effectiveness by the Reason

1¢	1¢ of fuel tax generates
STATE	\$4,100,000
COUNTY	\$1,470,000
CITY	\$840,000
TOWNSHIP	\$180,000
TRANSIT	\$100,000

Foundation. It also employs one of the smallest staffs of all state DOTs. While that frugality has served us well, we are anticipating a funding shortfall of **\$4.4 billion** over the next 20 years.

Based on FY2021 revenue, 1¢ of state motor fuel tax will generate about \$6.7 million annually.